

LEGEND	
	= TYPE 3 OR TYPE 2 BARRICADE (REFLECTORIZED BOTH SIDES)
	= STANDARD SIGN (POST OR STAND MOUNTED)
	= ROAD CLOSURE

9/11/2024	David Ostergaard		
NO	DATE		

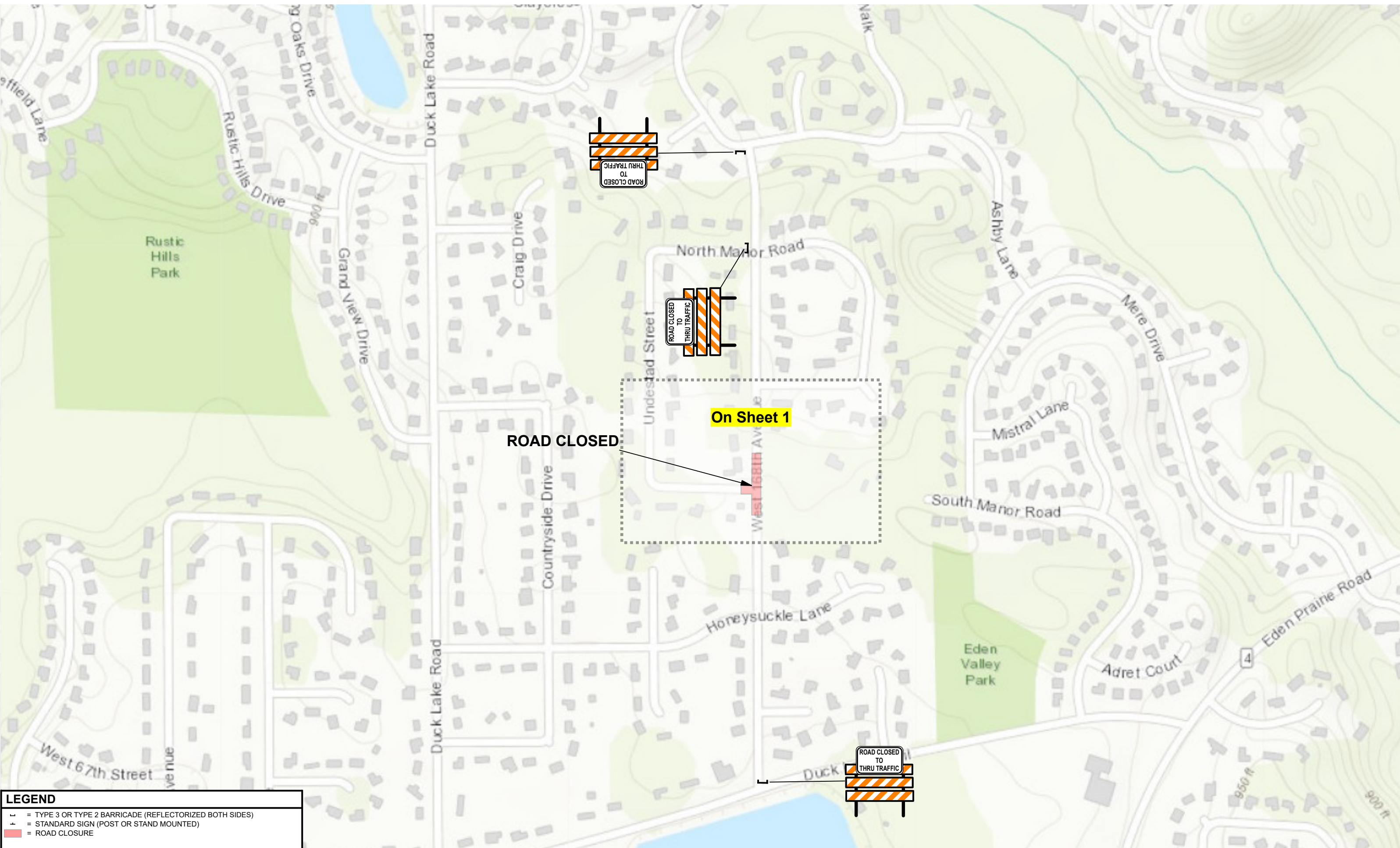
Disclaimer - This is a proposed traffic control device layout. It has not been prepared by a Professional Engineer and must be approved and accepted by the Road Authority. Safety Signs LLC does not assume any legal liability.



Nodland Construction
Road Closure



168th Ave W & S Manor Rd - Eden Prairie, MN
 PHASE N/A | JOB# N/A | 1 OF 2 SHEET



LEGEND	
	= TYPE 3 OR TYPE 2 BARRICADE (REFLECTORIZED BOTH SIDES)
	= STANDARD SIGN (POST OR STAND MOUNTED)
	= ROAD CLOSURE

9/11/2024	David Ostergaard
NO	DATE
REVISIONS	

SPEED LIMIT
30



Disclaimer - This is a proposed traffic control device layout. It has not been prepared by a Professional Engineer and must be approved and accepted by the Road Authority. Safety Signs LLC does not assume any legal liability.



Nodland Construction
Road Closure



168th Ave W & S Manor Rd - Eden Prairie, MN
PHASE N/A | JOB# N/A | 2 OF 2 SHEET