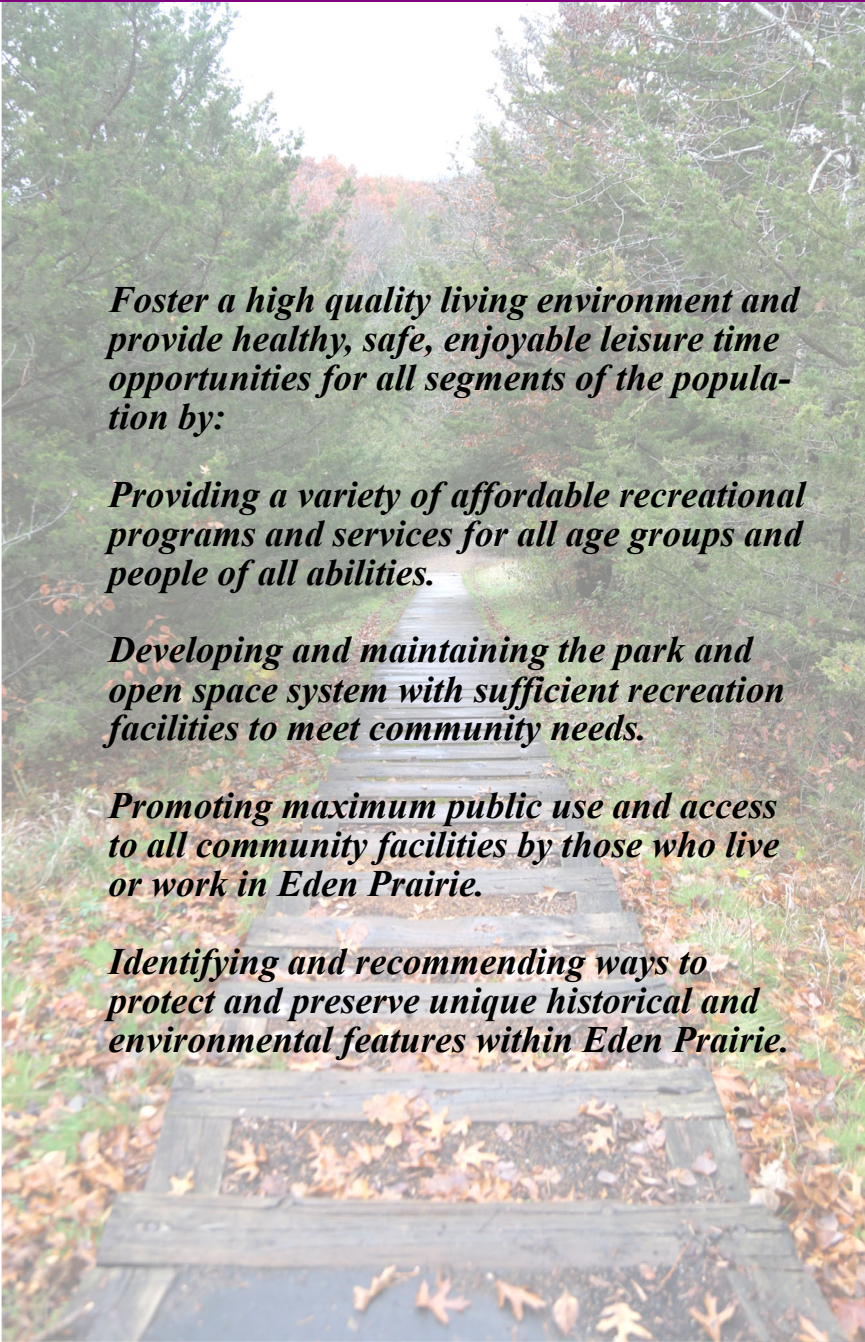




Eden Prairie Parks and Recreation

2022 Annual Report



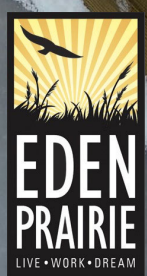
Foster a high quality living environment and provide healthy, safe, enjoyable leisure time opportunities for all segments of the population by:

Providing a variety of affordable recreational programs and services for all age groups and people of all abilities.

Developing and maintaining the park and open space system with sufficient recreation facilities to meet community needs.

Promoting maximum public use and access to all community facilities by those who live or work in Eden Prairie.

Identifying and recommending ways to protect and preserve unique historical and environmental features within Eden Prairie.





Dear Mayor, Council, Commission Members and City Manager,

Our outreach efforts increased this year. In addition to targeting geographic areas, we secured grants to provide summer and winter equipment to be used at no cost by the participant. Partnerships with other city departments and volunteer organizations provided additional resources and more face-to-face contact with our residents.

Special events continued to provide an opportunity for many of our residents to gather and experience community building experiences. People Fest, the Hometown Celebration and the Harvest to Halloween event were just a few of the very well attended events in 2022.

Facility use continued to see record attendance. From skating rinks to beaches, along with the art center, outdoor center, senior center, and community center; visits and program registration saw increases.

Caring for our parks and natural areas remained a high priority. We continued working to address the Emerald Ash Borer and completed intense restoration efforts at several of our natural areas.

Thank you again for your support and confidence. We look forward to providing the programs and activities our community members have relied upon to increase their sense of community and enhance their quality of life.

Sincerely,

A handwritten signature in black ink that reads "Jay Lotthammer".

Jay Lotthammer
Parks & Recreation Director

Department Purpose

The Parks and Recreation Department provides a comprehensive parks and recreation program, including park acquisition; planning and development; maintenance of the parks, trails and recreation facilities; forestry; and leisure services programs. These efforts compliment and supplement the leisure services provided by the school districts and other community service organizations.

Department Objectives

- Preserve natural resources through development of partnerships, regulation, education, management, and land use planning.
- Investigate opportunities for leisure facilities that reflect changing demographics with traditional and nontraditional partnerships.
- Maintain the quality of the existing system by investing in renovation and improvement of the parks and facilities.
- Continue to monitor trends and provide opportunities for new activities such as pickleball, off-leash dog areas, cricket, etc.
- Provide the public with access to remote areas within the park system so residents can enjoy and appreciate the natural resources they have preserved.



Divisions

The Parks and Recreation Department consists of the following divisions:

Parks & Recreation Administration

- Park Acquisition
- Department Planning
- Budget Preparation

Parks and Natural Resources

- Park and Trail Maintenance
- Forestry Management
- Cemetery Administration
- Natural Resources Management
- Tall Grass/Weed Inspection
- Park and Trail Construction
- Park and Trail Repairs
- Park Property Management
- Construction Contract
- Development Review
- Maintenance Contract Administration

Recreation Services

- Recreation Administration
- Youth Development
- Therapeutic Recreation
- Community Programming
- Athletic Programs
- Adult & Senior Recreation
- Outdoor Recreation
- Senior Center Operations
- Outdoor Center Operations
- Art Center Operations

Community Center

- Community Center Operations
- Ice Arenas & Concessions
- Aquatic Center
- Fitness
- Beach Operations
- Park Facility Rentals



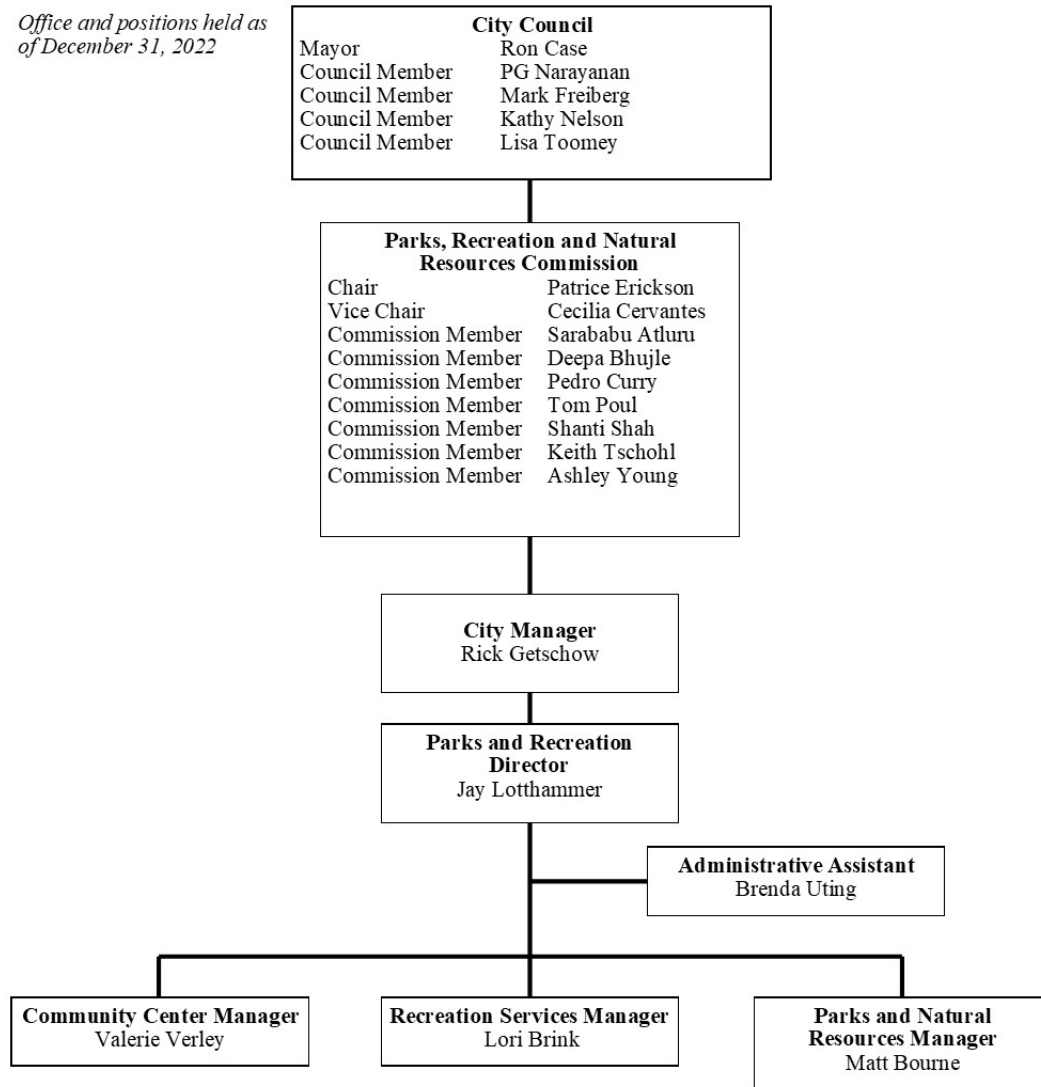
Eden Prairie parkland:

- 2,540 acres of land
- 37 parks
- 5 special use facilities
- 7 historic sites
- 15 conservation areas
- 234 miles of paved trails and sidewalks
- 13.6 miles of nature trails
- 90% of the total planned off-road trail system is complete

Staff serve as liaisons to:

- Parks, Recreation and Natural Resources Commission
- Planning Commission
- City/School Facility Use Advisory Committee
- Other short-term ad-hoc committees
- Sixteen athletic associations/clubs

Office and positions held as of December 31, 2022



Partnerships between the City and the community it serves are vital to the success of the Parks and Recreation Department.

The following partnerships are currently in place:

Three Rivers Park District manages Bryant Lake Regional Park, Anderson Lakes Park Reserve, and the LRT trail corridor.

Institution Community Work Crews (ICWC) helped facilitate park projects.

Eden Prairie Assembly of God Church leases land for community gardens.

Forestry & Natural Resources partners with **Hennepin County, US Fish & Wildlife, and the Minnesota Valley National Wildlife Refuge** to continue restoration work at Richard T. Anderson and Prairie Bluff Conservation Area



The **MN DNR** has awarded grants to help the city manage Emerald ash borer.

The city maintains a trail easement with **Hennepin Technical College**.

Minnesota Chapter of the **American Parkinson's Disease Association** promote fitness classes.

The fitness division partners with **Rabbit Rescue of MN** for Bunny Yoga.

People Reaching Out to People (PROP) continues its partnership with the Art Center in preparation for their annual fundraiser, Empty Bowls. Open Studio members, teaching artists and workshop participants created over 100 bowls to give to the organization.

The **Arthritis Foundation** promoted Walk With Ease classes, a program designed for adults with arthritis.



The **Eden Prairie Lions Club** sponsored two of Eden Prairie's annual special events, Schooner Days and the Corn Feed. Along with enhancing the July 4th Hometown Celebration by providing beer.

The **Metropolitan Airports Commission** leases the City of Eden Prairie fifty-five acres of land adjacent to Flying Cloud Airport for youth athletics. The complex includes ballfields, soccer fields and parking. MAC also leases 3.17 acres of land for the community gardens, and another 40 acres of land west of the airport known as Cedar Hills Park.

Eden Prairie Library provided a Story Stroll for Harvest to Halloween at the Barn. They also provided story time during the event with tales of autumn and not-too-scary stories. They also provide these services at the Pop-Up Splash Pads.

In 2022, **Eden Prairie Schools** and City of Eden Prairie started a new partnership to offer free STEM and fun activities on non-school days for students from the Targeted Services program.

The City of Eden Prairie Park Maintenance and the Eden Prairie School District **Grounds Maintenance** shared specialized maintenance equipment.

The **Eden Prairie High School** uses the Community Center for hockey practices and games, dryland training, swim and diving teams, enhanced fitness training and for physical education classes. The pool is also used by the Track and Cross-Country teams and pole vault practice. City trails are used by High School Track and Cross-Country teams. The tennis courts, baseball fields and soccer fields are also used by EPHS sport teams and physical education classes.

The Eden Prairie Community Center also provide **Eden Prairie High School** students with parking permits for a fee to park their vehicle in the Community Center parking lot during the school year.

The Senior Recreation Supervisor for Youth Development receive referrals from **School Service Providers** for students with disabilities to get involved in programs.

Eden Prairie High School students volunteer as technology

instructors during Seniors Get Social classes for older adults.



Staring Lake Park ski trails are used by the **High School Nordic Team** as a practice facility. The grooming of the trails is done by the ski coach. The public is able to use these trails for recreational skiing.

Eden Prairie Schools partner with the Outdoor Center on environmental learning.



The **Riley Purgatory Bluff Creek Watershed District** has partnered with the city to conduct water quality research projects and to help support our annual Tree Sale.

The **Nine Mile Creek Watershed District** has awarded a grant to help restore Cardinal Creek Conservation Area and also has helped support our annual Tree Sale.

Eden Prairie AM Rotary has hosted a buckthorn removal project at Edenbrook Conservation Area.

The **Prairie Edge Chapter of Wild Ones** continues to remove invasive species in Riley Woods.

MN GreenCorps allowed for one young professional to work within the Forestry & Natural Resources division, allowing the group to work on long term planning and increase outreach and education to the public.

The **National Charity League** – West Lakes Chapter in coordination with the city participated in several organized park cleanup events throughout the year.

Numerous **Boy Scouts** and **Girl Scouts** community service projects are conducted annually. In 2022, Eagle Scout projects included construction of an accessible garden at the Pioneer Trail Garden site, reconstruction of steps at the Staring Park Disc Golf course and construction of dugout covers on field #2 at Eden Lake Park.

Community Education's Early Childhood Family Education program partnered with Special Events in the summer, attending all of the KidStock performances to share their resources with the community.

Community Education's EPIC After School Program continued to host Art Center classes at a variety of elementary schools. Kids are able to take a class from an Art

Center teaching artist in offerings such as ArtMix, Hopping Through History – Drawing and Painting, and Around the World in Clay.

Expanding the reach of the Art Center, teaching artists visited campers attending the **Bell Museum's** summer camp program to guide participants through arts-based projects. We also offered summer camps at **The Blake School**, Hopkins Campus, in 2022- Cardboard Creations, Fused Glass, and Introduction to Sculpture.

The Art Center continues to work with **Ultimate Sustainability** to provide adults with autism arts-based classes every other Wednesday from September – May.



The Eden Prairie Players continue their partnership with **PiM Arts High School**, using their Loading Dock Theater for winter show performances. The Art Center also provided their students with opportunities to volunteer.

Using a Local Collaborative Time Study (LCTS) Grant through Hennepin County, the Art Center created free arts programming for youth from the **Briarhill YMCA** program and **Treehouse Eden Prairie**. Participants experienced a wide variety of projects, from dancing to spoken word to fused glass.

Glen Lake Golf partners with the city to provide low-cost golf lessons and give residents the ability to utilize a high-quality golf facility.

Senior Community Services partners with the Senior Center to provide a licensed social worker to provide support and assistance to seniors in Hennepin County.

Community Education partners with the Senior Center to provide educational programs and classes.

Vision Loss Resource provides leaders for the Low Vision information group that meets monthly at the Senior Center.

Trellis support seniors with volunteers to provide health insurance assistance and education at the Senior Center.

Eden Prairie Senior Center and **Richfield Senior Center** partner in order to provide monthly coach bus trips and tours through **Medicine Lake Tours**.

Meals on Wheels staff provide meals to be a pick-up and delivered. The Senior Center is a great location for this service along with the food warming bags storage.



EPPIA (Eden Prairie Professionals in Aging) professional senior services and resources along with professional education session provided at the Senior Center.

Benedictine Senior Living, Edina Realty, Elim Shores/ Cassia, Flagstone Senior Living, Health Source, Hear Today, Home Instead, Humana, Next Chapter Insurance, Prairie Bluffs Senior Living, Senior Asset, Senior Living Insite, Southwest Transit, St. Croix Hospice, Summit Place Senior Campus sponsored and supported Senior programming.

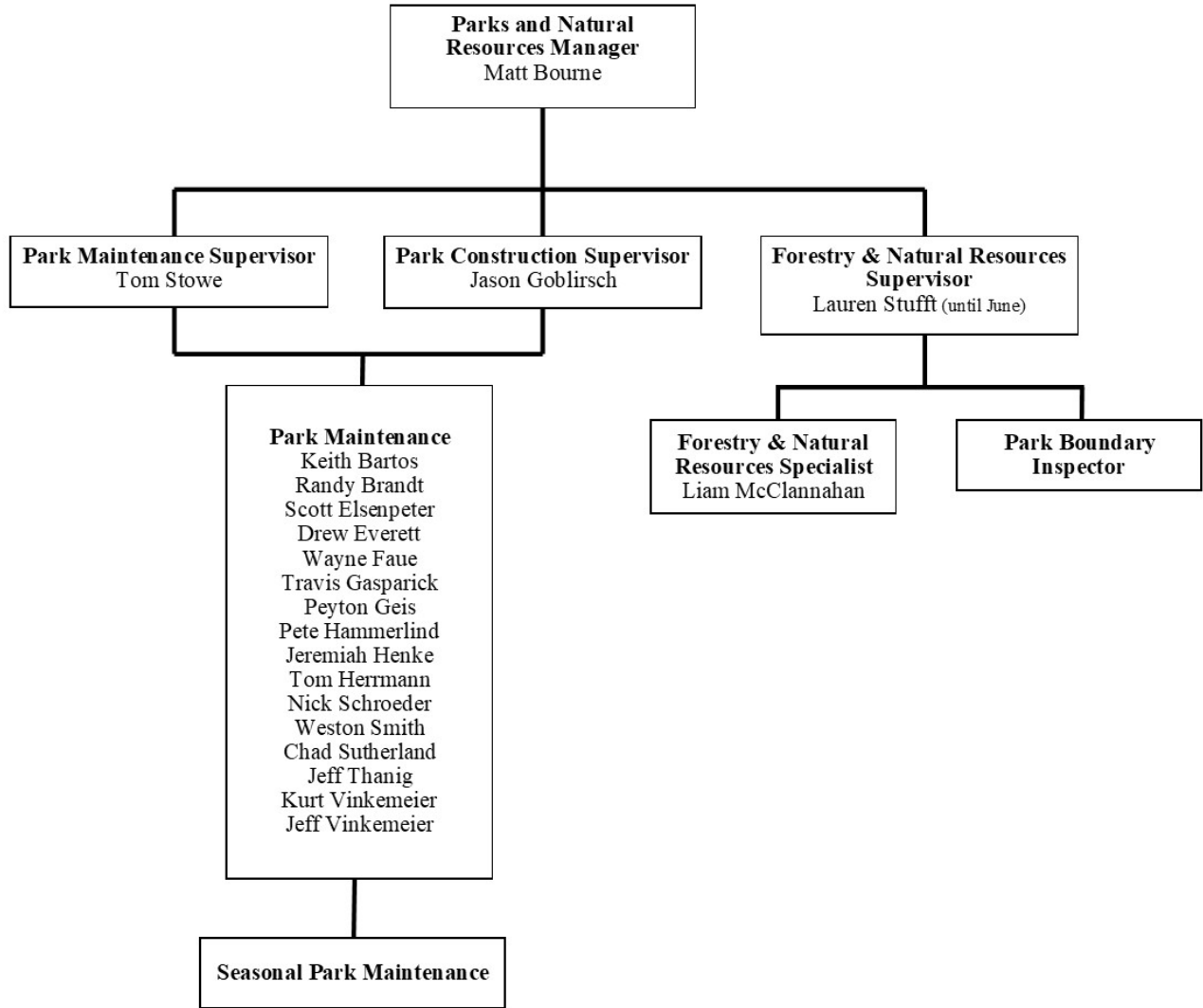


The University of Minnesota **Master Gardeners** program educates the kids attending the Prairie View Playground Camp on gardening. They also share their wisdom at the Annual Community Gardens Open House



The **Youth Athletic Associations** are provided a monthly board meeting location, a city liaison and special pricing for field/pool/ice time. Associations provided additional funding for special maintenance projects/buildings. The youth athletic associations in Eden Prairie are:

- Baseball Association**
- Boys Basketball Association**
- Girls Basketball Association**
- Fastpitch Association**
- Volleyball Association**
- Track & Field Association**
- Foxjets Swim Team**
- Aquajets Swim Team**
- Football Association**
- Hockey Association**
- Lacrosse Association**
- Soccer Club**
- Soccer Association**
- Figure Skating Club**
- Twin Cities Youth Rowing Club**





Park Maintenance

The Park Maintenance Division is responsible for the care of the City's 44 parks and special use areas. The 16 full-time employees and 20 seasonal workers maintain over 1,000 acres of developed parkland, including:

- 2 swimming beaches
- 6 fishing piers
- 9 hockey rinks/free skate areas
- 51 baseball/softball fields
- 46 soccer fields
- 13 sand volleyball courts
- 6 bocce courts
- 23 basketball courts
- 16 permanent pickleball courts
- 37 tennis courts; two have overlaid lines for 6 or 8 pickleball courts
- 15 football fields
- 7 rental picnic areas
- 3 community garden sites

- off leash dog use areas: 1 year-round and 5 seasonal
- lit sledding hill
- 1 full, 1 partial disc golf course
- cricket pitching mound
- skate park
- 33 play structures
- 2 splash pads
- over 150 miles of bituminous bike trails

The passive areas of the park system include an additional 1,745 acres of property that is unmaintained or involves minimal maintenance work. The removal of diseased and hazardous trees, prescribed prairie burns, trail mowing and periodic boundary checks are the primary maintenance work that is done within these areas.

Many of our parks and conservation areas saw a large increase in usage due to the pandemic as people sought out ways to spend more time outside. Since then, this increase in use has not slowed as many people discovered the benefits of enjoying the outdoors.

2022 Construction or Improvements to Parks

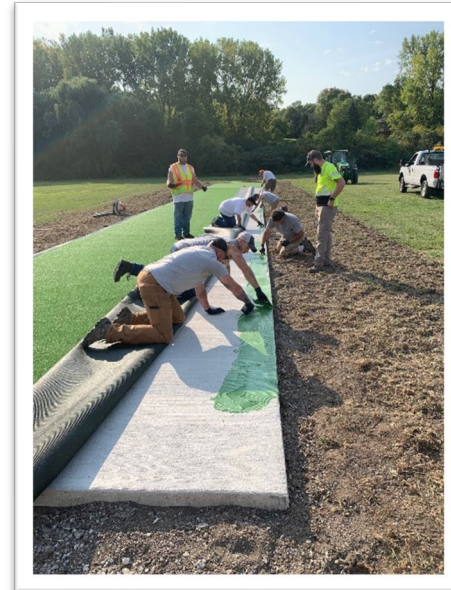
Riley Lake Park Playground Area

The area near the playground was redesigned to include new seating areas, upgraded cooking areas around the pavilion and a redesigned play container. New play equipment was added in 2021 with the remainder to be installed in the spring of 2022.

Play Equipment Updates

New play equipment was installed at Prairie East and Wyndham Knoll

Parks. This new equipment included features that promote active play and movement.



Nesbitt Preserve Cricket Pitch

The aglime cricket pitch at Nesbitt Preserve Park was upgraded this year to a new artificial turf pitch installed over concrete. This pitch will provide a much more playable surface for the users of the field and should be much less labor intensive to maintain. The area adjacent to the pitch was leveled and seeded and should be ready for play in the spring of 2023.

Nesbitt Preserve Splash Pad

The area around the existing playground at Nesbitt Preserve Park was redesigned to include additional seating areas, trail connections and a new splash pad. Construction began in the summer of 2022 and the new splash pad should be ready for use in the spring of 2023.

Trail, Sidewalk and Parking Lot Projects

Reconstructed the bituminous trail along the north side of Pioneer Trail

from Dell Road to Riley Lake Road and then north to the Riley Lake Park entrance.

Reconstructed the bituminous trail through the Red Rock Conservation Area from Boulder Point Road north to Coachmans Lane.

Replaced the bituminous parking lot and adjacent retaining wall at the Staring Lake Park west entrance.

Park Property Management & Easements

Dedicated:

No property dedicated to the City

Purchased:

No property purchased by the City

Tax-forfeiture:

No property purchased by the City

Conservation / Scenic Easements:

No easements recorded

Trail Easement:

No easements record

Boundary Inspection

The program of checking and marking city parkland boundaries has been going on for over 10 years. Since 2008 an electronic method of GPS verification has been used that is permanently recorded in our IT Department GIS Database. Each summer a seasonal staff person systematically checks the entire boundary interface of specific city parkland adjacent to private property. During this process electronic GPS data points of the property pins are collected, and then permanent signage is installed. Throughout the city there are over 2,400 private land parcels that abut park property.

During 2022, the boundary inspector worked in 17 different parks or conservation areas. A total

of 703 property interfaces were checked, 416 property pins were found, and 33 property posts installed. As a result of their inspection a total of 78 trespass violations were discovered. After notification most of the violation issues have been resolved.

Eden Prairie Cemeteries

In 1986, the ownership of the Pleasant Hill Cemetery was transferred to the City. In 2022, the City began operating both cemeteries within the city with the transfer of Eden Prairie Cemetery.

The maintenance and operation costs associated with the cemeteries are accomplished through a

Perpetual Care Fund (PCF). The PCF is entirely separate from the City’s General Fund Budget. Recently, City staff has seen a continual increase in the number of cremation burials both at Pleasant Hill and statewide. This increase has led to more people choosing cremation over traditional burial for the first time. This trend led to the City installing a columbarium on the southern portion at Pleasant Hill in 2020 to give those choosing cremation a separate option than purchasing a traditional grave plot. Since its installation, the City has received overwhelmingly positive feedback.

**Pleasant Hill Cemetery
Established in 1885**

2022 Burial Record: 22 Burials

2022 Expenditures

| | |
|--------------------------------|---------------|
| Administration | \$ 58 |
| Contracted Services | \$ 11,217 |
| Miscellaneous (electricity) | \$ <u>356</u> |
| | \$11,631 |

2022 Revenue

| | |
|------------------------------|---------------|
| Sale of 22 graves | \$27,200 |
| Sale of 9 columbarium niches | \$ 17,550 |
| Sale of 1 ossuary | \$ <u>700</u> |
| | \$ 45,450 |

**Eden Prairie Cemetery
Established in 1865**

2022 Burial Record: 33 Burials

2022 Expenditures

| | |
|--------------------------------|---------------|
| Contracted Services | \$ 26,771 |
| Miscellaneous (electricity) | \$ <u>400</u> |
| | \$27,171 |

2022 Revenue

| | |
|-------------------|------------------|
| Sale of 35 graves | \$ 45,600 |
| Balance Transfer | \$ <u>29,391</u> |
| | \$ 74,991 |

*Lawn services contracted with Outdoor Environments

*Interments contracted with Diethem Services and DH Excavating



The City contracted the installation of supplemental cable support system and reduction pruning on mature, heritage bur oak at Staring Lake Park. This work was performed to preserve a highly valuable specimen and veteran tree located at a focal point of the park.

Thirty large trees were pruned to remove storm damage; improve clearance to structures, trails and pedestrians; or improve tree structure.

The City developmentally pruned 150 young trees to promote long-term structure that is more resilient during loading events such as windstorms or ice/snow loads.

The Forestry & Natural Resources Division is responsible for the following programs and services: disease tree management, general tree maintenance, tree planting, native plantings and prairie maintenance, ecological restorations, Parks Clean Up day, Arbor Day celebration, Tree City USA, City park boundary oversight, and City weed and tall grass inspections. The division is administered by the Forestry & Natural Resources Supervisor. Full-time, seasonal employees, and contractors used are in the activities included within this division.

General Tree Maintenance

The city works to preemptively remove disease prone trees that may become hazardous to trails or rights-of-way; along with identifying dead or hazardous trees for removal in parks and trails. The Division responds to calls for emergency storm damage to remove fallen or hazardous trees blocking streets and rights-of-way (ROW). The City removed a total of 954 trees on city property.



Diseased Tree Management

The city continues to manage disease trees, with emerald ash borer (EAB) continuing to be the most destructive in 2022.

- On the second year of a three-year treatment contract with Rainbow Treecare to treat 446 public trees. Eden Prairie Schools treated 221 ash trees. Private property owners utilized contracted pricing to treat 2,210

private ash trees, protecting them from EAB.

Other nuisance tree management efforts resulted in the removal of:

- 55 Dutch elm diseased trees (16 on public, 37 on private)
- 31 trees with oak wilt (16 on public, 15 on private)
- 33 hazardous trees (17 on public, 9 on private that were hazardous to public property)
- 149 stumps were ground in parks and right of ways

Tree Planting

The city is committed to replacing removed trees when there is significant canopy loss or ecological impact. The Division has been able to utilize grant funding for tree plantings including DNR Protected Community Forest Grants, DNR Shade Tree Program Bonding Grant, and Healthy Trees Hennepin County to plant 378 trees



on City property. In partnership with Eden Prairie Schools, we applied for a Healthy Tree Canopy Grants for Schools to plant 82 trees on district property.

Maintaining Natural Areas

The 2,000+ acres of natural areas maintained by the city require ongoing management to improve biological diversity, reduce invasive species, provide habitat for wildlife, among other ecological services.

Eden Prairie has three rare remnant prairies sites, with only 1% of prairie habitat remaining in Minnesota it is important that we protect and manage these areas properly. This includes public help by remaining on designated trails to prevent further damage to these precious areas.

In addition to these remnant prairies, the city has also converted nearly 47 acres of turf into native prairie since 2014, which requires various management activities to maintain such as prescribed fire and removal of invasive species. This year the city was able to burn 5 acres over six of these conversion sites.



Ecological Restorations

The city works to identify degraded areas where native plant communities can be restored and be reasonably managed. Due to the city's limited resources, it takes the dedication of the public to help manage City property for invasive species. The Vegetation Management Plan (VMP) approval process helps the City to keep track of work on City property and within scenic/conservation easements and to provide professional assistance to those who are considering such work. This year, we had 6 applications for VMP approval where citizens completed invasive species removal work (primarily buckthorn removal) on City land. An additional 40 VMP applications were issued for invasive species removal within scenic/conservation easements. Additional VMPs were approved to restore shorelines, add raingardens, establish buffers, and install bee lawns.

Buckthorn removals took place at Cardinal Creek, Edenbrook and Riley Creek with help from dedicated volunteers, especially from Wild Ones. In partnership with Hennepin County, the oak savannah restoration at Prairie Bluff Conservation Area and Richard T. Anderson Conservation Area continues. This year was focused on reduction of invasive species and reseeded with volunteer collected seeds harvested locally.

Public Outreach

The coordination of the Parks Cleanup Day had 573 volunteers more than doubling the number of parks cleaned last year to 55.

The Annual tree sale held on the weekend after Arbor Day sold 150 trees to residents at a discounted

price through an ongoing partnership with Tree Trust.

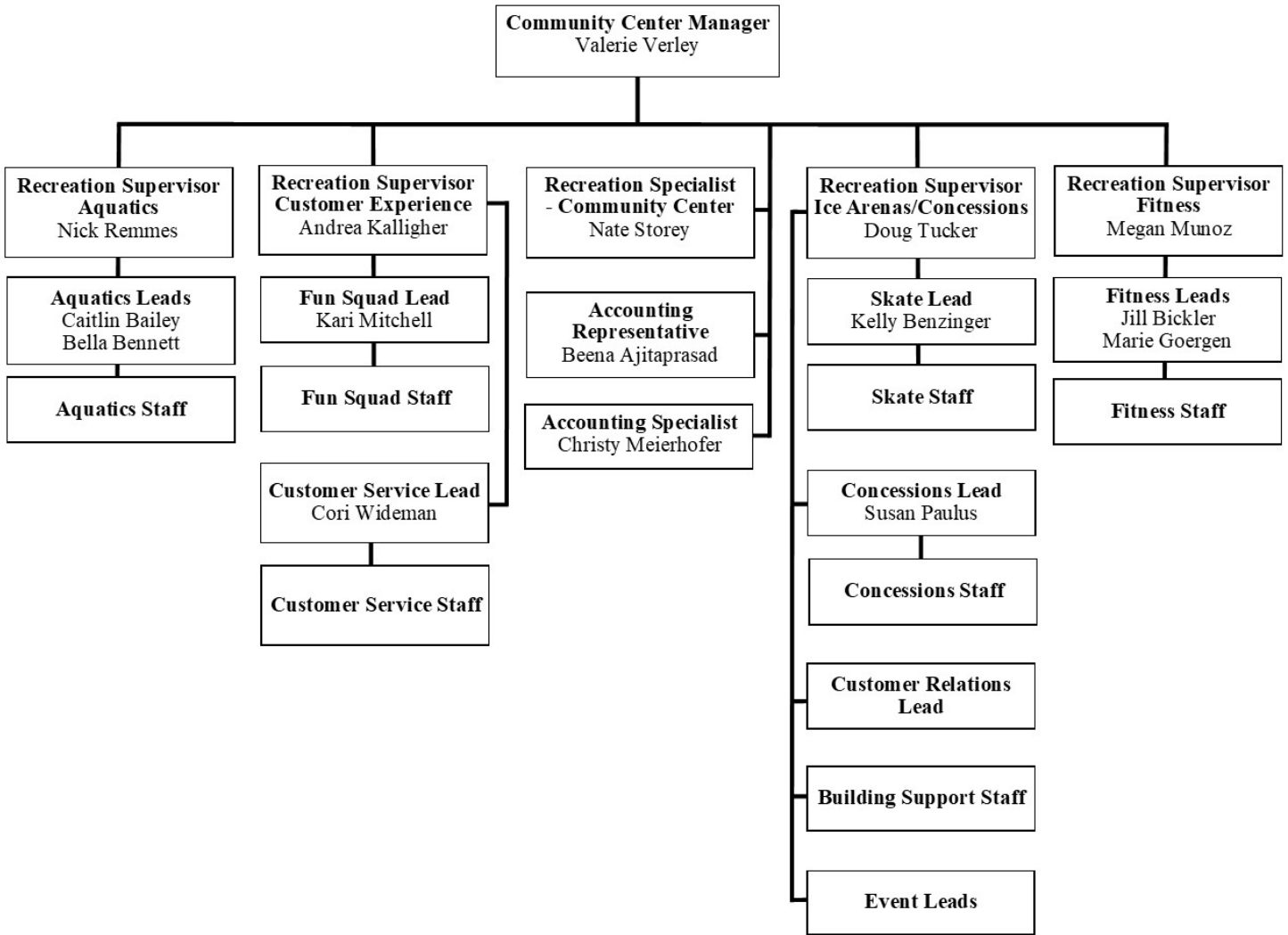
Hosted two prairie seed harvest events. The July event hosted our interns plus over 20 members of the US Fisheries and Wildlife Service internship program. The September event was open to the public, and despite seasonally unusual cold and rainy weather, had significant local volunteer turn out. The seeds collected is reused in our prairie restoration and expansion work.

Assisted coordination of several volunteer buckthorn bust events. Two were led by the Wild Ones Prairie Edge chapter volunteer group at Riley Creek Conservation Area. Another two were led by longtime resident volunteer and Master Naturalist, Glenn Olson, at Edenbrook Conservation Area. All the event areas are part of larger restoration work the City manages to rehabilitate woodland ecosystems.

Eden Prairie has now been a Tree City USA community for 39 years.

Addressed 78 tall grass and weed complaints and 55 SeeClickFix complaints.

For the second time, Eden Prairie was chosen as a host site for a member of the Minnesota GreenCorps program. This member assists with vital aspects of our urban forest management plan and natural resource restoration work, including EAB surveys, tree planting and prairie seeding. By being a host site for a GreenCorps member, Eden Prairie is providing significant investment in that member's professional development and career advancement, furthering our connection and impression in the regional green industry.





Membership

In 2022, we saw the resurgence of membership numbers reminiscent of pre-pandemic years. With many companies having their employees return to the office or pivot to a hybrid model, new habits were created amongst the general public and many people came back to the Community Center. This was the first full calendar year that there were no COVID restrictions or closures at play.

Membership Fun Facts:

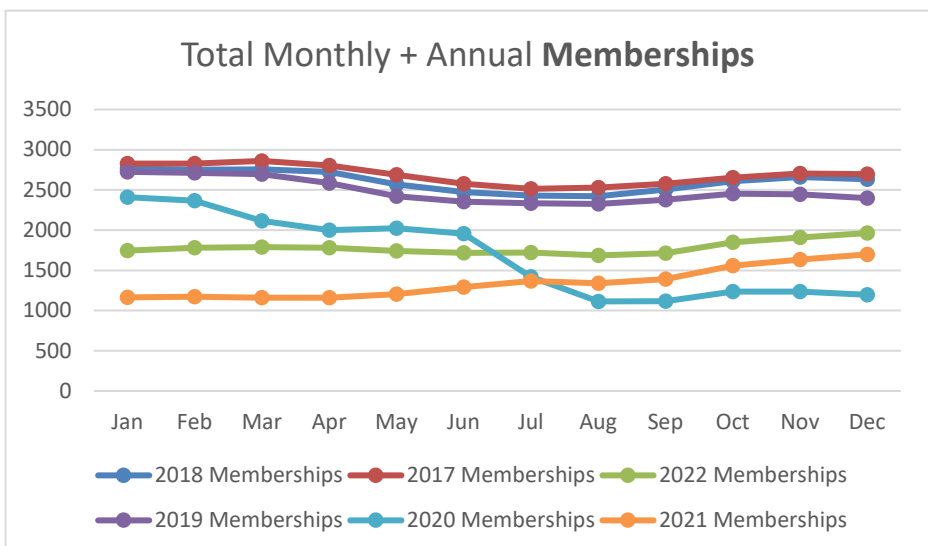
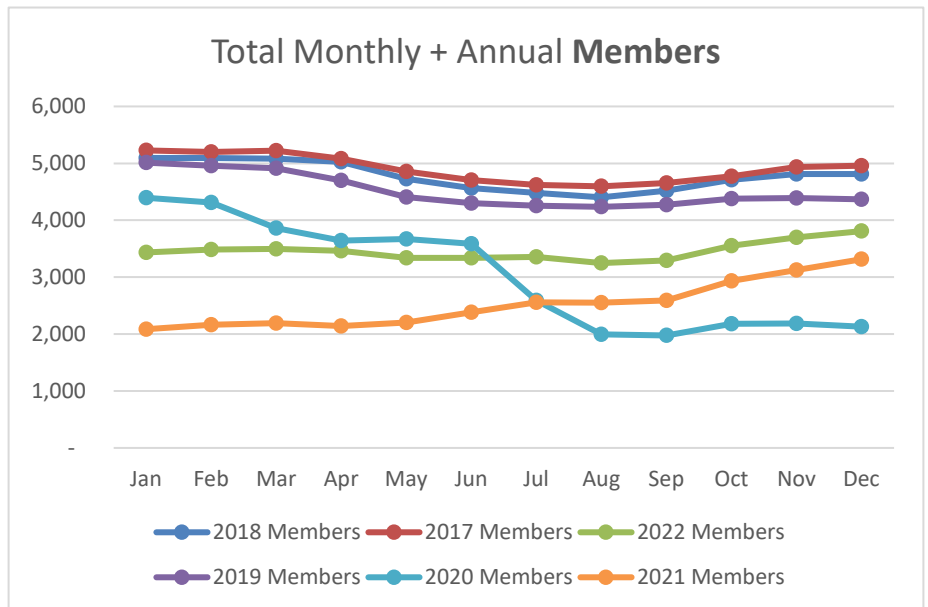
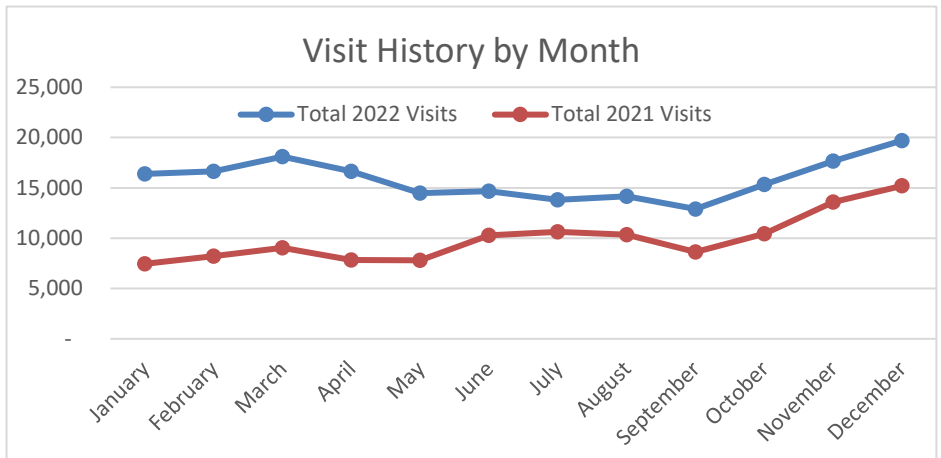
Members ages 15-, 16- and 17-year old's make up the highest number of members of a certain age group.

The second largest group are 63- and 64-year-old. The late teen demographic is over 200 members higher than the senior age group.

Membership was up 15% at the end of 2022 from where it had been at the end of 2021, with 3,809 members.

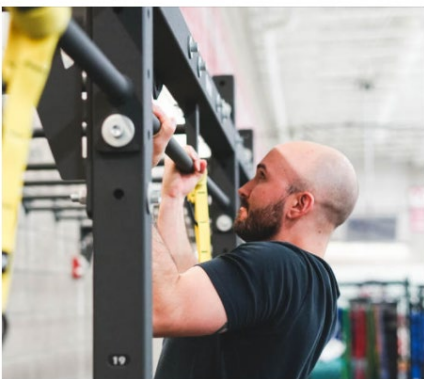
Membership revenue came in at 113% of our projected revenue for 2022!

Membership did not dip in the 2022 summer months for the first time ever. Membership was up 700 members in September, coming out of summer, compared to that of September 2021.



Membership Recruitment & Retention

Fall Into Fitness is the largest membership recruitment campaign put on each year, always taking place in October. October has proven to be when we see the biggest number of patrons coming back indoors once the craze of the school year starting has dissipated. The free enrollment period for this campaign lasted 9 days. During that time the Community Center gained 239 new members, totaling approximately \$5,800 in membership revenue.



The Community Center **12 Days of Fitness** campaign has long been a promotion to stay healthy around the holidays. It is also a great membership retention tool, while everyone's schedules get busier during the holiday season. This year, the campaign went a few steps further. This included a strategic design of the 12 Day shirt that members can win if they attend 12 times between Thanksgiving and Christmas. This year included a positive mantra, as a continued focus on the mental health of our members and patrons. A social media campaign was implemented for the first time, where members could submit a mirror selfie picture of themselves to be entered into a drawing for a personal training session or a Stretch Studio session. This was the first push to utilize social media to entice a membership retention campaign, with more to come going forward to build off that momentum.

In 2022, the fitness division began to see pre-pandemic numbers in membership, class participation and staff recruitment. About 30% of the fitness team were hired in 2022. Many of the protocols put in place during the pandemic continued to be successful in a post-pandemic setting, e.g., fitness class pre-registration, virtual class options and fitness floor cleaning protocols.

Group Fitness Classes

Group fitness classes have always been a big draw for Community Center members. Classes in 2022 hit maximum capacity, as well as filling long waitlists. Body Pump, Zumba, Silver Sneakers Classic, Yoga and Aqua were the most well-attended classes.

New additions to the fitness class schedule included Body Balance, a choreographed Yoga/Pilates mix, and Kids Fitness Class Sampler, a pay-for class for youth ages 8-11 to try a variety of exercise formats.



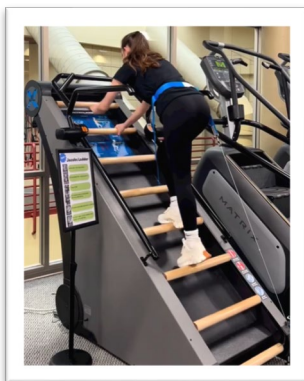
More and more members felt comfortable working out in the studios. For members who were unable to attend in person, many classes had a livestream option. This option was available to all regular members, as well as the 48 virtual-only members in 2022 who attended the livestreams and viewed on-demand videos.

To help instructors hone their skills, a Body Pump Techniques workshop was created and implemented. This

quarterly in-house workshop helped Body Pump instructors to practice the newest release, break down any tricky moves and ensure a consistently taught class.

Fitness Floor Equipment

When not taking a fitness class, members are working out on the fitness floor, so keeping equipment up-to-date and in good working order is key. The fleet of treadmills was rounded out with the purchase of 13 new units to match the seven purchased in 2021. Additionally, three Alpine Runners, high incline treadmills, and two Jacob's Ladders, cardio climbing machines, were added to the fitness floor. These unique pieces aren't found in any of the surrounding gyms or community centers.

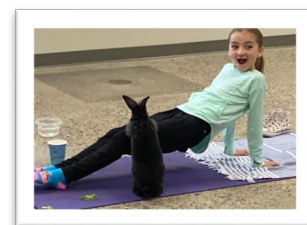


Personal Training

Personal training fees were last raised in 2010, so in 2022, market research was conducted on personal training rates at nearby gyms and community centers. Findings indicated that the current rates were lower than most. Package prices were increased to competitive rates. The changes were well-received and indicative of the personal training and Stretch Studio staff's skills. The number of sessions purchased in 2022 was 35% greater than in 2021.

Special Events and Partnerships

The fitness division held several special events and cultivated partnerships with non-profit organizations throughout the year.



Bunny Yoga and **Candlelight Yin Yoga** continued to be two of the most well-attended specialty fitness classes. Bunny Yoga was offered in February, April, June, August and October. Candlelight Yin Yoga was offered in January, February, November and December. Nearly all sessions sold out, proving to be popular and unique programs that boost both physical and mental health. Bunny Yoga also helped raise awareness and funds for Rabbit Rescue of Minnesota.

The May **Indoor/Outdoor Triathlon** was small in registration numbers, but large in friendly competition as racers swam or rowed, then biked in the gymnasium, ending with a three-mile run around Round Lake.

The 3rd annual **POUND for PROP** was held on September 24. Generous exercisers attended this free fitness class at the Staring Lake Amphitheater. About 225 pounds of non-perishable food were donated.

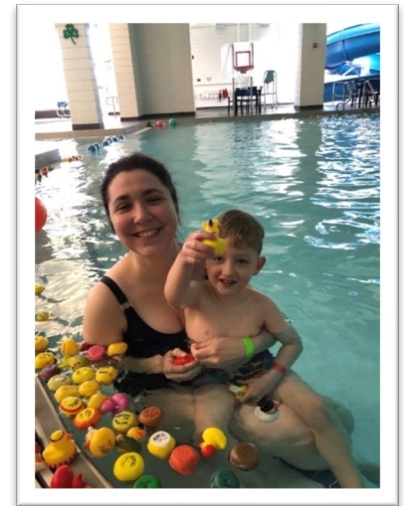
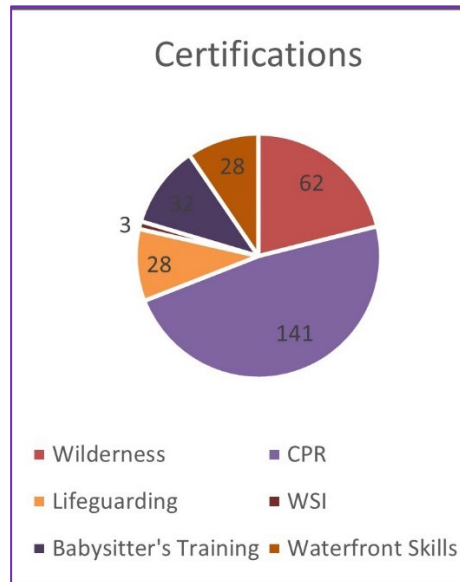
In December, the fitness division hosted a special class schedule for the 5th annual **Day of Giving**. Attendees were asked to bring donations for three non-profit organizations: PROP, Toys for Tots and the Sojourner Project.

Aquatic Programming

Open rec swimming saw an increase in participation over 2021. More than 40,000 people visited us in 2022, a 27% increase from 2021. Lake Riley Beach and Round Lake Beach also saw a total of 16,056 visitors in 2022. Our lifeguard staff continues to rise to the occasion with large attendance numbers at our facilities.



developing a new water safety program for parents which will be implemented in 2023. Our safety education program continues to be popular and provides valuable education to our community.



2022 Key Achievements

Women's only open swimming and swimming lessons made a return in 2022 with great turnout and support from the community.

Sensory-Friendly Open Swim also was implemented as a monthly event in the recreation pool.

Nick Remmes was hired and started as the Recreation Supervisor-Aquatics in August.

The Aquatics Center hosted 19 swim meets in 2022 including Eden Prairie High School, Foxjets, YMCA, the Master's State meet and Boys High School Sections.

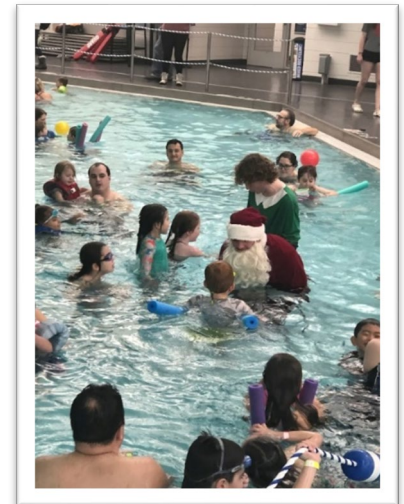
Western Wings Special Olympics Team holds their spring swim team practices at the EPCC pools.

Certification Courses

In 2022, we issued 311 American Red Cross certifications in Babysitter's Training, Wilderness First Aid, CPR, Lifeguarding, and more. In 2022, we started

Events

In 2022, we offered monthly special events in the pool. These events continued to be highly attended. The inflatable obstacle course continues to be the biggest hit event. The Floating Pumpkin Patch and Swim with Santa are also very popular events. Staff and patrons all have a lot of fun at these events.



Swimming Lessons

As private and semi-private lessons continue to be popular, we pivoted to online registration for those lessons. This has provided more consistency for parents, children, and instructors.

Group swimming lessons remain very popular and fill very quickly on registration day. We continue to hire and train staff to offer the number and quality of lessons for our community.

The ice arena returned its first full year of a normal operations since pre-pandemic. EPHS and the Eden Prairie Hockey Association (EPHA) returned to the regular schedules they would have in a typical year.

Spaces within the ice arena got cosmetic upgrades in 2022, including painting with new color schemes, updated signage, and significant upgrades to the EPHS Boys and Girls hockey locker rooms.

The EPCC also welcomed its first electronic ice resurfacer (often referred to as a Zamboni). This machine replaced an old propane powered resurfacer.

The **Ice Show** made its return after being cancelled in 2021 due to the pandemic. The theme for this year's show was "Best of the Decades" and was a salute to the 40th Anniversary of the Ice Show which is produced by the EP Figure Skating Club.

EP Skate School

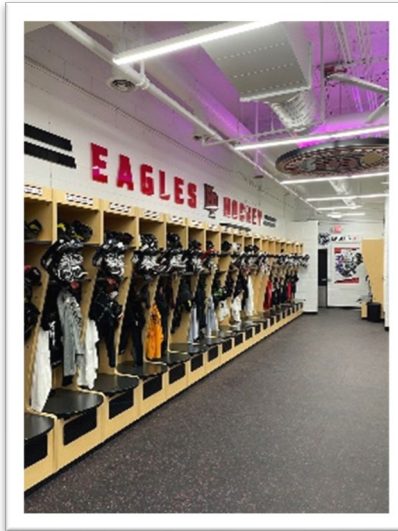
Formerly known as "Learn to Skate" skating lessons at the EPCC were rebranded and are now called "EP Skate School". City sponsored Learn to Skate lessons are offered throughout the year. There were almost 1,000 skate lesson participants in 2022.

Eden Prairie Hockey Association

Returned to a normal schedule for the calendar year with nearly 1,800 hours of ice rented from the facility. The association hosted six tournaments in addition to camps and clinics. EPHA is trying to make hockey more accessible by offering "Try Hockey for Free" clinics where equipment and ice time is provided for free.

Eden Prairie High School Hockey 2022 was a year of change as both

the girl's and boy's programs hired new coaches. A fundraising effort took place called the "EP Hockey Legacy Campaign" in which funds were raised to make improvements to player locker rooms and update signage in the facility. This project required great coordination between City staff, Eden Prairie Schools, and community volunteers. Both programs now have greatly improved locker rooms which are becoming the standard in high school hockey.



EPCC Concessions

Susan Paulus was hired to the Lead for EPCC café and mobile café operations. Susan has made a great impact in her short time as Concessions Lead.

The EPCC café has expanded its menu and there is more staff training.

The mobile café continued to offer concessions fare at offsite events like the Staring Lake Concert Series and Arts in the Park.

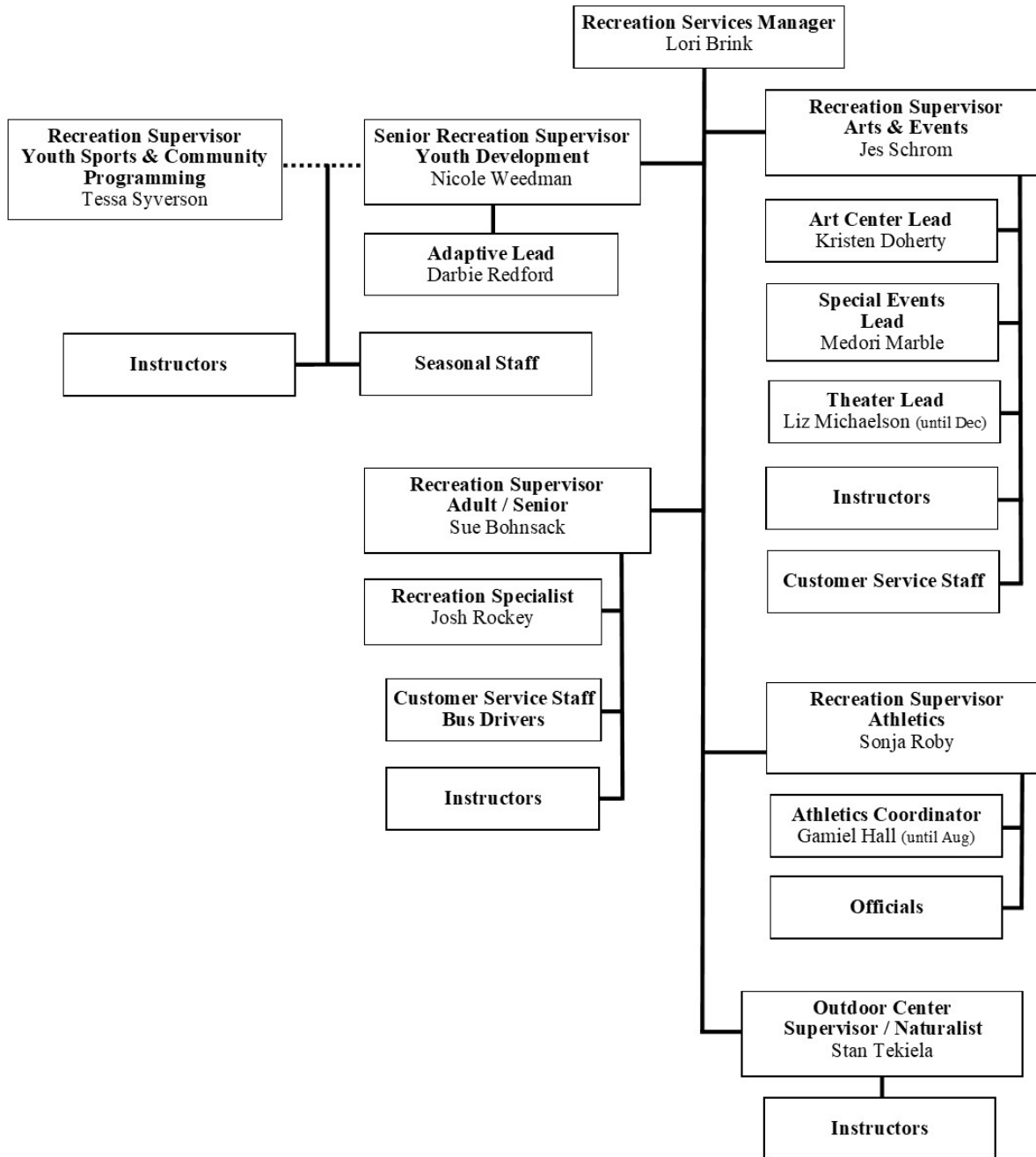
Outdoor Skating Rinks & Sledding Hill 2022-23

The Staring Lake sledding hill opened early on November 30 for some extra sledding fun. Rinks opened for the season on December 24 and were open until Feb 26. The City has nine outdoor rink locations. The most visited are Staring Lake, Round Lake, Homeward Hills and Miller Park.

The City was fortunate to be approved for a grant through Hennepin County and the SHIP program which helped purchase ten sets of cross-country skis and 20 pairs of ice skates. The public enjoyed free use of ice skates at various ice rinks through the winter months. The large bin of skates moved from park shelter to park shelter and neighborhood to neighborhood giving the public the opportunity to try skating! Providing access to recreation equipment and spreading the opportunity throughout the community is one small example of addressing potential barriers for our residents. The City continues to offer free use of equipment (snow tubes, ice skates and cross-country skis) at Staring Lake warming house.

We partnered with the Eden Prairie Hockey Association to provide free outdoor practices at 3 sites, 3-4 nights a week. Miller Park was the site of an adult open broomball on Thursday nights.

Winter Blast was held on Saturday, January 7. Unfortunately, poor ice conditions caused the cancelation of Skate with your Date and the Neighborhood Pop-Up event at Prairie View Park.



The Recreation Services Division offers a variety of affordable recreation programs and services for people of all ages and abilities. Division staff oversee programming and management of the Art Center, Senior Center and Outdoor Center and provide programs and events throughout the city.

A New Normal

The programs and events offered in 2022 looked much like they did before the pandemic. In most cases, residents were ready and eager to participate in programs and attend community events. Many programs were full with waiting lists again, and staff were happy to be back interacting with participants. However, public health concerns were still a high priority and required a great deal of care and attention for program staff. Facing an already tight labor market and difficulty staffing programs, the added challenge of periodic infections/required isolation for staff was disruptive to programs. This challenge will continue into the foreseeable future.

Some strategies that were necessary during the pandemic, like conducting meetings or interviews remotely via Zoom or Microsoft Teams, have proven to be effective ways to remain flexible as we move forward. Job candidates often appreciate the opportunity to schedule a remote interview without having to work travel time into their schedule. Similarly, staff and commission members were able to still be present at meetings when they were unable to be on site.

Evolving Marketing Strategies

Some lessons learned during the pandemic have further moved the department toward maximizing digital marketing and communication. After refining the process during 2021, the high-volume spring/summer season of offerings were marketed via a one-stop website and a high-design, colorful digital brochure. This brochure was downloadable and printable, but also was placed on a platform that allowed for page-by-page turning on the screen. This was sent to everyone on the city’s email listserv and through the school district’s e-flyer system. Additionally, efforts were made to align Parks and Recreation’s summer registration date with Community Education (same day, two hours apart) so that families were able to have all information for summer ready for them at the same time.

For both Fall and Winter, no designed brochure was created. Instead, the one-stop website and email/social media promotion was used with strong results. Instead of a brochure arriving in the mail, residents received a postcard promoting seasonal activities and alerting them to registration dates.

The summer arts brochure – “Sounds Around Town” was modified to appear as an insert in the city’s summer Life in the Prairie newsletter, saving a great deal of resources.

Providing Access

Figuring prominently in the Recreation Division work plan is to find and serve segments of the community that are currently underrepresented in fee-based programs. Some new partnerships and grants allowed the department to directly impact this goal. Kids who might not have the household resources or available schedule to participate in tennis lessons were able to receive free lessons and a free tennis racquet through a grant from the USTA and a partnership with Community Education. This is just one example of several strategies being planned to reach out to new segments of the community.

The Passport to Fun program provides free access to open gym/swim/skate at the Community Center as well as fee assistance for other recreation programs. A total of \$11,222 in assistance was provided in 2022.

| Year | Participants Approved |
|------|-----------------------|
| 2022 | 693 |
| 2021 | 592 |
| 2020 | 626 |
| 2019 | 1,034 |
| 2018 | 992 |
| 2017 | 844 |
| 2016 | 737 |
| 2015 | 671 |

To assist families further, the division continued the “split payment” option for summer camp registration, allowing families to pay just half of their summer camp fee at the time of registration and the rest at the beginning of summer.

Youth Development

The mission of Youth Development is to provide diverse recreation programs and activities to all youth, adults and families in Eden Prairie.

Summer Camps

Summer was again the busiest time of the year for youth development camps with an overall increase in campers.

The **Leaders in Training** camp filled. Thirty youth between the ages of 12-14 took part in two sessions. The camp offered youth the ability to increase leadership, communication, initiative, organization skills as well as develop a resume and cover letter and participate in a mock interview session. Teens are required to do a service-learning project, and chose to collect gently used or new toys, board games to give to an organization that supported families displaced from the war in Ukraine.

A new element to build spirits and excitement during the dog days of summer included leadership coordinators creating the **Summer Staff Olympics**. This was an internal challenge for day camp staff to work as teams to complete daily challenges that increased leadership skills and positive confidence building in each other. The results were a highly competitive and fun week of activities that lead to one team bringing home enough points to win the camp Olympics trophy and t-shirts for each member.

Winter Camps

During winter break the December, a 3-day camp for youth ages 5–10 was held at the Community Center. The non-school camp offered a wide variety of activities, games,

and crafts to keep busy and active. Ninety youth attended which was an increase of 46 from 2021.

Hiring and Recruitment

Staffing was a challenge for the year. 50 summer camp staff were hired 6 of them were inclusion companions to support people with disabilities while they participate in programs. A staff referral program was created to incentivize current employees to recruit friends and family in 2022. Four staff participated in recruiting five new team members.

Youth Sports

Eden Prairie Parks and Recreation partners with numerous youth sports vendors and businesses to offer a wide variety of program. Currently we partner with: Amazing Athletes, American Karate Studio, Healthy Kids Running Series, Legacy Gymnastics, Lynch Basketball, MVP Cricket, RevSports, Robert Mehus-Kung Fu, Skyhawks, Snapology, Soccer Shots, Three River's Park District, TGA Tennis and Golf and USTA Adult Tennis. These programs are offered at many of our parks and indoors at the Eden Prairie Community Center, Eden Prairie City Center and at the business locations.



We hired 15-20 tennis and archery seasonal staff for additional programs.

The City was awarded a \$4,500 grant from USTA (United States Tennis Association). With the financial support, we were able purchase equipment and fund staff wages for free outreach lessons.

The **Healthy Kids Running Series** is offered at Staring Lake Park for weekly kids fun runs. Over 400 kids ages 2-15 participated in races from 50-yard dash, 75-yard dash, quarter mile run, half mile run and 1-mile run. Each week has a theme in which participants are encouraged to dress up (superhero, sports team, favorite animal, etc.). A lot of fun was had by all!

Community Outreach

We partnered with the Eden Prairie School District to provide free tennis lessons to students from the Extended Summer Learning program. Each Wednesday during summer, 30 elementary students were given a 45-minute tennis lesson from Parks and Recreation tennis staff in the gym at Oak Point Elementary School. On the last day, each child received a brand-new tennis racket and sleeve of balls.

Eden Prairie Parks and Recreation hosted two **Pop-Up Splash Pad neighborhood outreach events**. At these free community events, participants played lawn games, got sprayed by a firehose, explored a police squad car, checked out library books and were given free tennis lessons by Parks and Recreation tennis staff. Over 300 participants tried tennis, many of whom had never held a racket before. Tennis instructors taught an introductory tennis lesson with equipment purchased with grant

dollars. Also, 20 lucky participants won a free tennis racket and sleeve of balls to continue to play tennis in their local neighborhood park.

Community Center Youth

Play Care and Fit Kids are childcare options for patrons of the Community Center. The staff are members of the Fun Squad and are responsible for providing creative learning experiences for children ages 6 months through 11 years of age. Due to staffing shortages, staff remain tasked with caring for the large age range inside the Play Care space. The combined attendance number is 2,423 visits in 2022.

Birthday Parties

Beginning in 2022, we were excited to offer more swimming parties, and also bring back skating parties. In addition to the two existing offerings, we launched Play Structure Birthday Parties for children 5 and under, and also the introduction of Zumba parties for ages 6 and over. Swimming and skating parties occur during open swim and skate times. We hosted a total of 49 birthday parties, and were very excited about this accomplishment as we had limited staff available.

In December 2022, we transitioned to Swimming Parties with exclusive use of the Recreation Pool. This allows for a better experience for party goers as well as lifeguards. Open Swim participation is at an all-time high, so moving birthday parties to its own time allows more space for open swimmers. This move has been a positive change for our birthday party program.

Access for All

Provide innovative recreation programs to individuals with disabilities; as well as inclusion services that foster access and health promotion.

Disability and Inclusion Services

2022 was the year programs picked up steam and grew in participation numbers. 206 registrations occurred in 2022, up from 2021. The focus was building relationships with participants and their families and working together to find programs offerings that interest them. Other promotional efforts included speaking at the Special Education Advisory Council at the School District, on the programs and services the city offers.

Therapeutic Recreation hosted a resource fair of vendors who provide supports and services to people with disabilities at the ADA Celebration held during KidStock. The adaptive camp participants and staff performed the skills they learned through the Get Your Glee On summer camp on stage as well.

During the spring, Adaptive Recreation partnered with Grace Church to host a special needs activity night. Fifty youth, age 12+, attended the evening at Grace Church along with 20 volunteers to support and be buddies in the various activities. A pizza party kicked off the night of a DJ, arts & crafts activities, board games, movie room, gym games and a sensory friendly quiet room.



“The Eden Prairie Adaptive Programs are truly a lifeline for our family! They allow my son a fun and safe environment where he can enjoy some social independence and we can have some down time knowing he is in good hands! I cannot really express how grateful we all are to have such programming available to us. The staff and volunteers are so kind and patient!”

– Shari





In support of the City’s mission to foster a high-quality living environment and provide, healthy, safe, enjoyable, leisure time opportunities for all segments of the population, Eden Prairie offers a variety of adult athletics programs, from leagues to open recreation.

“It was unanimous among the team...this league is fantastic. We came from a disorganized league in the east metro, and this was a complete 180. It’s further for most of us, but worth it.”
 – Men’s Volleyball Team Manager, Fall 2022

Adult Athletic Leagues

Adult athletics offers recreational sports activities such as leagues, open recreation, and special events year-round, seven days per week in a variety of sports, formats, and skill levels. Volleyball, softball, basketball, and flag football are officiated or self-officiated with a league attendant. Pickleball is purely self-officiated. Adult athletics has approximately 20-25 part-time staff members.

Staffing shortages and dwindling participation impacted typical league offerings for broomball and racquetball which are now offered in an open recreation format. 2022-2023 is the first season that basketball leagues are self-officiated with a league attendant. Feedback from team managers are positive – they enjoy the league better in this format.

In anticipation of continued referee shortages across all sports, we’re investing in additional training on and off the court for referees to maintain quality services. We are also adjusting league offerings and format when needed so there’s still opportunities for residents to participate.

Overall league participation rebounded 16% from 2021 to 2022 with the largest participation increases in volleyball and pickleball.

Access for New League Participants

In summer 2022, adult athletics piloted an individual registrant option for a targeted league, Women’s 4s Sand Volleyball. Two teams were successfully formed. Registrants were asked questions to place them with other players of similar skillset and age group. This extra step also cultivated the social aspect of league participation – strangers became friends. One team stayed together and registered as a team for the following sand volleyball session and indoor Fall volleyball.

The individual registrant option successfully gained a new pool of participants and contributed to ongoing team participation.

Cricket

The Nesbitt Park cricket pitch was upgraded to a concrete and turf pitch in Spring 2022 which is a highly sought-after type of pitch. In recognition of the increasing popularity of cricket, staff continue to organize and formalize usage of the pitch and alternate fields of play to best serve Eden Prairie cricket players.

Youth Athletic Associations

Eden Prairie is home to sixteen youth athletic associations offering a variety of activities for area youth ages five and above. The Recreation Supervisor of Adult Athletics serves as the staff liaison to six of these youth athletic association, representing 7,000 youth. The staff liaison works with each athletic association in a variety of ways including scheduling outdoor athletic facilities for practices, games, clinics and tournaments invoicing for facility use fees, and assisting with maintenance issues, resident and participant issues.

“Thanks for your flexibility in keeping the league going despite a very tough COVID landscape. I know the guys on our team really appreciated the chance to still play. I can see why the EP leagues remain so popular.”
 – Men’s Basketball Team Manager, Winter 2022

Senior Center – Celebrating Vitality in the Community

The mission of the Eden Prairie Senior Center is to *provide* for the social, recreational, educational, psychological and physical needs; and to *enhance* the visibility of older adults and *promote* their participation in all aspects of community life.

Senior Advisory Council

The Senior Advisory Council is a group of seniors who advise and make recommendations to staff on matters relating to the programs at the Senior Center, and related services for residents of the community. This group meets monthly to discuss current and future programming for the Senior Center. They are dedicated participants and volunteers at the Senior Center. Due to the new construction of the upper level, the Senior Advisory Council now supports a café and coffee area where guest can purchase a snack or Keurig cup of coffee. Revenue from this café was \$1,042 in the first partial year.



Woodshop

The Community Woodshop is located at the Senior Center and is open to the entire community. The shop is open during regular business hours of 8:30 a.m. – 4 p.m. Woodshop users were very happy to get back to regular use of the

woodshop. There were 17 newly trained users in 2022.

Get Involved

The Senior Center hosts a well-established core of weekly, monthly, and yearly programming with sprinkles of one-time trips and special events. Themed Bingo games was new to the calendar and has proven to be a big hit with more than 45 people attending each month. Almost daily there are new visitors stopping in to learn more about what the Senior Center has to offer.

What is new in 2022

- Minnow races
- Great Courses
- Theme Bingo
- Low Vision Support Group



Volunteers

Over 50 volunteers spent 1800 hours in one of many areas including: quilting, greeting cards, program leaders, decorating, gardening, game leader, woodshop helper and at special events. A Volunteer Recognition dinner was held in June to honor the work of the Senior Center volunteers.

Upper Level Renovations

The new space offers independent recreation space for a small group to play games, get a snack or cup of coffee while placing a piece into the community puzzle. Guests gather before or after programming to socialize or just spend some time around the gorgeous fireplace.



Senior Center Attendance

2021 was 6,615 visits

2022 was 26,494 visits





Nature Preschool Program

The long-standing Nature Preschool Program is held each Friday morning throughout the school year and focuses on developing pre-Kindergarten skills in a nature/natural setting. The program was full for the entire 2022 school year.

Summer Camps

The Outdoor Center summer camps are the backbone of our programs. Typically, over thirty different camps throughout the summer are offered. These camps are offered in both mornings and afternoons and run five days a week. In the summer of 2022, a full camp schedule of was run. The maximum number of participants was increased to sixteen. All camps were held with a few exceptions. The weather cooperated and we had a successful summer camp program.

Nature Rocks

The weekly open house, Nature Rocks, is a very popular free program. Visitors are invited to tour the facility, participate in an activity and learn about programs and the animals that live at the Outdoor Center. The open house is held every Saturday. More than 1,300

participants enjoyed the offerings at the Outdoor Center in 2022.

Raptor

The Outdoor Center is home to a permanently injured Barred Owl (right wing injury) named Whisper – named because of an owl’s ability to fly without making a sound. During 2020, Whisper regressed in his training, was reluctant to be retrieved from his mew and was no longer comfortable with his handler. During 2022, Whisper made great progress in his training. He was given a way to exit his mew via an open window. He spends his days outdoors in the sunroom. He is making great progress and it is our goal to have him back out with the public in 2023.

Public Programs and School Groups

Eden Prairie schools sent more than 300 preschoolers (Little Eagles), over 3-weeks time, to the Outdoor Center to learn about animals. Over 100 kindergarten students from Eagle Heights came for a program of apple cider making, parts of a tree and leaf ecology. Staff from the Outdoor Center provided an in-person program to 120 third graders at Prairie View, 100 third graders at Oak Point, and 60 third graders at a school in Edina. Owl pellets were provided to all the children to dissect and learn about the digestive system of these raptors.

Adult/child programs continue to be offered on Wednesday and Thursday mornings; and are well-attended and became a regular program.

In January and February, a new program called Snowtime Saturday was offered to the public. Families could try out cross-country skis, snowshoeing, kick sledding, ice

fishing and snow sculpting. This was a popular program that will continue in 2023.



Other Program Notes

A new decomposition chamber was installed. Deceased animals are put in and over a matter of weeks or months it breaks down to a skeleton which is used in educational programs.

Two new naturalists were hired in 2022 to replace two who resigned.

New log benches were installed around the fire pit area.

2022 had one of the best years for maple syrup production at the Outdoor Center. We are hoping to enter our syrup in the MN Naturalist Association maple syrup contest in 2023 competing against other nature centers.

2022 saw the passing of our rabbit “Smokie” and also our Guinee Pig. We hope to replace these in 2023.



Art Center – Fostering Creativity in the Community

The Eden Prairie Art Center is home to a wide array of programs, ranging from classes for toddlers to in-depth programs for experienced adults. The Art Center enhances the quality of life and fosters creativity in our community by providing access to the arts for people of all ages and abilities.

Bi-Annual Maintenance

The Art Center continues to improve its use of space and in 2022 added another week of maintenance to help continue to maximize the facility and resources. There is one week in January and one week in September that are now set aside for closure to the public so staff can organize, update, and clean. In September, staff completely re-organized the main studio into three distinct work areas, which now accommodates up to 20 more participants and 10 more

Open Studio Members than in previous years.

Programs, Visitors, and Members, Oh My!

The Art Center exploded with activity in 2022, increasing from approximately 4,360 visits in 2021 to 8,584 in 2022! Participation increased in every category except the Open House for Youth (we blame the weather, as it was the first nice day of the year), private classes (new in 2022) and school groups.



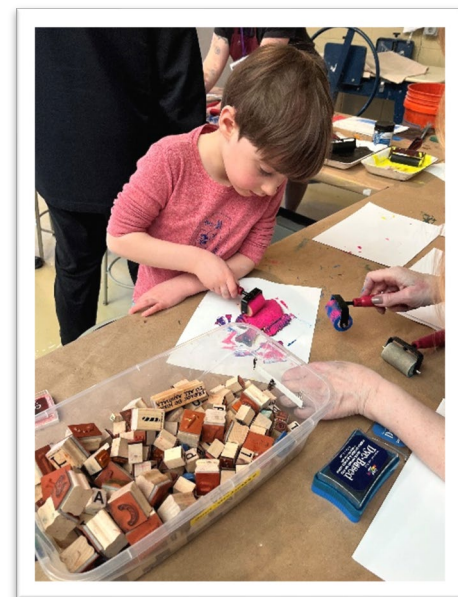
See the incredible increases below:

- Open Studio Members: +49%
- Open Studio Visits: +46%
- Private Lessons: +114%
- Story and Art Time: +222%
- Birthday Parties: +174%
- Group Outings: +132%
- Program Enrollments: +48%
- Outreach/Off-site Programs: +77%
- Public Walk-Ins: +247%
- Open House (adult/teen); +213%
- Arts in the Park Visitors: +157%



The center’s new preschool program, PreK Arty Party, was finally able to start after many years of waiting from the pandemic. Now youth ages 3.5-6 can spend Friday mornings with us learning and practicing social emotional skills, fine and gross motor abilities, and basic academic knowledge through arts and movement-based projects.

Due to popular demand, the Art Center introduced family art classes so the entire family can dive more deeply into a medium. Classes are 4 – 8 weeks long, meeting once a week for several hours.





Open Studio

Open Studio continues to grow, and the Art Center is near capacity even after adding more member storage space. Due to the increase, studio guidelines were updated to create an equitable and safe space. Current members must take an Art Center class every two years in the medium in which they are working, and new members must either take a center class or the [Re]Fresh option to acclimate to our studio and be approved for uninstructed use.

The membership benefits also increased with many opportunities for folks to share their creativity. See the new benefits added in 2022 below:

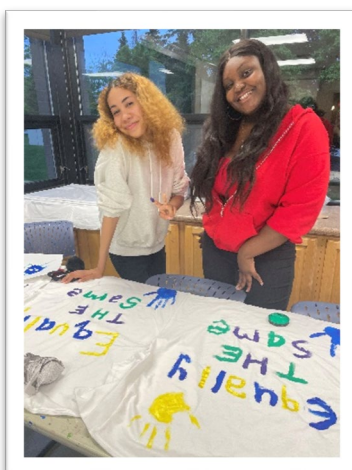
- Advising Hours: time set aside each month for members to get advice from expert teaching artists
- Discounts on classes/workshops at the Art Center: 10% for all members
- Member critique sessions: time reserved for members to gather, share their work/process, and support one another's growth

- Ability to sell work at the annual Open House (adults/teens) and Arts in the Park
- Discount for a full booth at Arts in the Park: 25% for all members
- Access to specialized workshops or classes just for members



Out and About

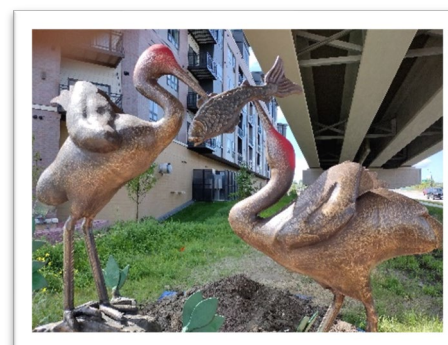
The center is close to full preparation for the new program ArtSite, which will bring Art Center programs to off-site locations in clay, glass and printmaking.



PUBLIC ART

Public art continues to be an important part of the city and 2022 brought four new artists/projects, as part of the Rotating Art Series, for display at the Senior Center, MN River Vista Overlook tunnel, Purgatory Creek Park and Staring Lake Park, and the City Center.

The city also worked with developers at Elevate and Flying Cloud Commons to recruit and hire artists to create and install permanent public art. "Cranes and Fish" by Michael McLaughlin was installed at the Elevate apartment and commercial development near Southwest Station and a new piece from artist Greg Mueller is planned for installation in the summer of 2023 at the Flying Cloud Commons.





Pop Up Splash Pads

2022 was the return of the popular outreach event that works to connect with neighborhoods through activities hosted by Police, Fire and Parks and Recreation and local community organizations. Two dates were held July 20 and August 9; 400 - 450 people attended each. Community partners included **Hennepin County library** with a pop-up library for families to check out books, building blocks for play, imagination stations sets and bookmark activities. **Abbey's Hope** an organization that works to prevent child drownings and encourage active supervision in and around water handed out 139 free lifejackets to attendees and educated around their mission. **Fox 9 News** sponsored MN Nice Ice-cream for free ice cream treats. Recreational activities included free bike safety checks, tennis lessons, yard games, arts and crafts activities, and inflatable water toys. Police brought a variety of police vehicles and let the community experience inside. Fire created the splash pad using a fire truck that was a hit. Human Rights and Diversity Commission sponsored a Dunk Tunk for youth to dunk city officials, including the Police and Fire Chiefs, and council members. Volunteers from Eden Prairie High School Varsity Football helped in the facilitation of the two days.

Theater

The mission of the **Eden Prairie Players** is to enhance the quality of life for the community of Eden Prairie through:

- Entertaining and challenging theater experiences for audiences; and,
- Inspiring and nurturing theater opportunities for artists and volunteers.

2022 began by “re-adjusting” our schedule to get closer to what we typically offer. For the winter, we released the “Collection of One Acts: Special Edition”. In spring, we returned to our popular “Women’s One Acts”, a collection of short play written and directed by women. Summer brought a smash hit with the summer musical, “Rodgers and Hammerstein’s Cinderella” and a fun Summer Children’s Theatre Workshop play by Steph DeForie, “Mother Goose is Eaten by Werewolves”. In fall, we returned to our “Collection of One Acts”, highlighting unpublished works from all over the nation.

Sadly, we lost a beloved colleague, Liz Michaelson, in November. Liz served as producer of the Eden Prairie Players for over 18 years, coordinating over 40 productions. She was a cherished and irreplaceable member of the local theatre community and will be deeply missed. To honor her contributions to the theater, the Eden Prairie Players is dedicating all of their 2023 productions to Liz.



Community Band

Made up of over 60 local adult musicians, the Eden Prairie Community Band performs regularly across the Twin Cities area. The group rehearses weekly at Central Middle School. In addition to the concert band, Eden Prairie is also home to the Jazz on the Prairie Big Band and the Prairie Ramblers Dixieland combo, as well as other small ensembles.

2022 was a return to more concerts and consistent rehearsals for the community band. We were able to purchase a new 4-channel keyboard amp and a new Yamaha digital piano with pedal board and stand from the Eden Prairie Community Foundation grant submitted in 2021. Another spoiler alert, we have received another grant for items in 2023!

Arbor Day Walk and Green Fair

We continued to partner with Tree Trust to sell trees at discounted prices to residents and sold out again. We were rained out for the event, so looking for a sunny day in 2023. The tree walk at Round Lake was set up for year-round enjoyment.

Give Gathering

The Give Gathering was again held in September at Central Middle School, in partnership with Eden Prairie Public Schools and the Eden Prairie Community Foundation. The event featured over 25 local nonprofits and was attended by approximately 150 community members. Attendees were able to interact with multiple organizations to find what volunteer opportunities are available to them.

Festival of Jazz on the Prairie, Staring Lake Concert Series, and KidStock

Summer of 2022 brought a full roster of performances, serving over 6,200 people. The Festival of Jazz on the Prairie and Rib Fest moved back to their June slot and had a very successful event with over 600 jazz (and rib) lovers. The concert series continued to showcase a wide variety of bands/performers. For KidStock on July 26, we celebrated the signing of the Americans with Disabilities Act (ADA) with local vendors/resources, 3 Strings Band, and our own Friendship Camp performers. We will continue this in 2023, creating a tradition of celebrating neurodiversity and people with disabilities.

Hometown Celebration July 1, 3, and 4

The new format continued to receive overwhelmingly positive response from the community. July 1st celebrated veterans with a special concert featuring the EP Concert Band and Jazz Band, along with an Honor Guard and guest veteran speaker. On July 3rd, “Sparklefest” for families was moved to Round Lake Park and expanded its offerings, all free of

charge (except food trucks). July 4th kept much of the traditional activities but enhanced its food vendors in number and quality, which was very well received.

Movies in the Park

Screened movies were Encanto (2021), Hook (1991) and Back to the Future (1985). We were surprised with a visit from a real DeLorean at our showing of Back to the Future. It even had a flux capacitor!

PeopleFest!

PeopleFest! A Community Celebration of Culture, went back to its original form in 2022, with a kickoff party, performances at Staring Lake Amphitheater, a variety of Eden Prairie events with local hosts. We continued starting the party performances with a land acknowledgement. Additional events offered were:

- ◆ Field Trip to Mdewakanton Sioux Community Hocokata Ti Center
- ◆ Introduction to Hinduism class
- ◆ Artist reception and talk by Pa Na Lor
- ◆ Modern Science and Islam: Contributions and Inventions class
- ◆ Kashimana performance
- ◆ Intro to Jainism class
- ◆ Storytelling with Danielle Daniel
- ◆ An updated PeopleFest! Guide to Culture, History and Cuisine and “Are Your Stars Like My Stars” Story Stroll

PeopleFest! is a collaborative effort between the City of Eden Prairie, Eden Prairie Chinese Association, Eden Prairie Community Foundation, Eden Prairie Schools Community Education, Hennepin

County Library, Human Rights & Diversity Commission, Treehouse, and Interfaith Circle to celebrate the unique cultures represented in Eden Prairie.



Arts in the Park

Working with the communications department, the Arts in the Park staff marketed both the call for artists and the event itself with more gusto than ever before, and it worked! Exceeding the typical booth vendor count by double, the annual art fair took over more of Purgatory Creek Park on a beautiful day in August. The event had between 1,800-2,000 visitors. The cookie dough truck sold out. The shortbread guy sold out. There were many glitter-haired kids running around after visiting Glitter Bomb Hair and the Healthy Kids Running Series. The arts activities were busy from beginning to end, serving over 250 art makers.

We continued the first-time art sellers discounted fee and over half of the sellers were in this category. In addition, an Art Center booth and a Senior Center booth housed members from each center, selling their goods made right in our own facilities. We look forward to growing this event and supporting emerging and established makers and artists!

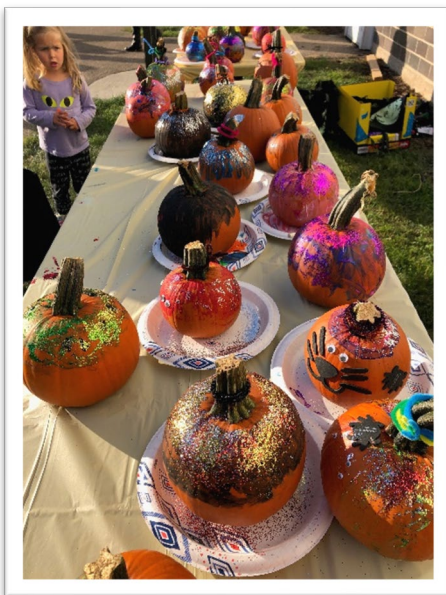


where kids could get sweet treats or trinkets, play games and more. The pavilion was transformed into a DJ dance party, yard games and a pumpkin inflatable jumper rounded out the Halloween area. As visitors walked down the path to Riley-Jacques Farmstead they experienced the harvest zone. Pumpkin decorating, face painting, art projects, climbing wall, inflatables, food trucks and beer, selfie stations, Dorenkemper house tours and horse and wagon rides kept people busy during the beautiful fall afternoon. New to the event was the implementation of four free shuttle busses from Flying Cloud Fields. A partnership with Southwest Metro provided a large commuter bus and a trolley, along with two city buses people were able to park at Flying Cloud Fields lots and ride the bus to and from the event. This addition eased the congestion and frustration that occurred due to the popularity of the event and limited parking onsite.

there was greater per-class attendance than in 2021.

Again in 2022, Fitness in the Parks was extended to October 1 to serve community members who preferred to exercise in a distanced, outside environment.

| | 2022 | 2021 | 2020 |
|-----------------------------------|-------|-------|-------|
| Classes Offered | 85 | 138 | 135 |
| Participants | 1,512 | 2,049 | 2,591 |
| Avg per class Participants | 17.8 | 14.8 | 19.2 |



Harvest to Halloween

2022 proved that Harvest to Halloween had become a community favorite. Celebrated at the historic Riley-Jacques Barn and Lake Riley Park close to 4,000 people came to experience the wide variety of activities. When people arrived, they entered the Halloween Zone, and were welcome by the Fire Department with treats and sent them to the Treat Trail made up of local businesses and organizations,



Fitness in the Parks

The Staring Lake Amphitheater was the sole setting for Fitness in the Parks in 2022, in its 7th year. Seven classes were offered weekly, including new formats Kickboxing and Core Fusion, along with fan favorites Zumba and POUND. Over 1,500 participants attended 85 classes. Although fewer classes were offered than in past years,



Internal Events

The Parks and Recreation staff work with staff from other departments as part of the Internal Events Planning Committee.

During 2022, all city employees enjoyed the following events:

- Spring Wellness Event
- Spring Employee Recognition
- Summer Picnic
- Chili Cook Off
- City Wide Open House
- August Employee Picnic
- Fall Employee Recognition
- Holiday Lunch

Park Facility Rental

In 2022, we had a considerably large increase of 29.7% of park facility rentals compared to the previous year. The Facilities Division installed brand new electronic door readers at the Homeward Hills Barn and Riley-Jacques Barn. This helps with security and make it more convenient to access the facility for private rentals. Not only were these park facilities used for private rentals, but our department was able to benefit from them as well. We were able to utilize the Staring Lake Amphitheater for many unique special events such as, Movies in the Park, PeopleFest!, KidStock, and many more! A total number of 372 rentals were able to take place generating \$80,310.78 in revenue.

See Appendix D for a detailed breakdown of fees.

Walks / Runs

During this summer of 2022 we were fortunately able to continue in-person walks and runs for the second-year post Covid-19 shutdowns. We utilize our Purgatory Creek Park/Lambert Pavilion to host most of these events. A couple of these include, Stop the Trafficking 5k which is put together by the Human Rights and Diversity Commission along with the Eden Prairie Police Department and Grace Church. We were also able to host the Eden Prairie Optimist Club 5k, which is an annual event held at the Purgatory Creek Lambert Pavilion. The 3.15-mile paved loop trail offers families the opportunity to bike, hike, or walk-through beautiful gardens and wetlands. All the local non-profit organizations that host these events donate a portion of their proceeds to a beneficial cause.

Field Rental

The City hosts youth athletic tournaments and clinics ranging from the state high school section 2AAAA girls softball tournament, MN Cup soccer tournament, MN Twins Camp, NAFA 18U Nationals (fastpitch), legion baseball playoffs.

Community Center Room Rental

The Community Center has 9 meeting rooms including 2 larger conference rooms that are available for residents, non-residents, businesses, organizations, and associations to rent. The rates for these rooms range from \$20 to \$90 per hour. The IT Department installed a newly integrated A/V system in the Cambria Room in August. This system now gives user groups the ability to host hybrid meetings which has been greatly beneficial. We also now offer private rentals in Room 112, conveniently located right outside of the recreation pool, making this space a perfect location for swimming birthday parties. A total number of 468 meeting room rentals took place generating \$43,634.89 in revenue.

Ice Rink Rentals

Ice rental revenue was up slightly in 2022 when compared to 2021. The biggest renters of ice are EPFA, EPHS, EP Figure Skating Club, Ice Edge Hockey, and AAA tournaments. The EPCC also hosts a number of “late night” adult user groups who rent ice at times when youth are unable to skate.

Senior Center Room Rentals

The Senior Center continues to be a great place to rent for parties, classes, religious gatherings, and meetings. Rental revenues were up significantly recovering to more normal numbers in 2022. The Senior Center hosted 60 room rentals for an income of \$11,044.89.



Community Garden Plots

Community Gardens were popular, with all gardens sold by May.

- 155 Gardens sold
- 37 plots – Pioneer Park
- 82 plots – Pioneer Trail
- 36 plots – Duck Lake Trail
- 47% Senior gardeners (55+)
- 50 New gardeners
- 105 Returning gardeners, which is a 67% return rate
- Six 5'x7' accessible gardens (three tables) are available at Pioneer Park.

Appendix A

Park Dedication Fees & Parkland Dedication

| Year Park Committed | Single Family per unit (\$) | Multiple per unit (\$) | Office/Industrial per acre (\$) | Park Fees Collected (\$) | Balance in Fund at End of Year (\$) | Land Dedication & Donation (acres) |
|---------------------|-----------------------------|------------------------|---------------------------------|--------------------------|-------------------------------------|------------------------------------|
| 1978 | 275 | 200 | 1,200 | 148,222 | -- | 128.71 |
| 1979 | 275 | 200 | 1,200 | 317,269 | 432,904 | 31.13 |
| 1980 | 275 | 200 | 1,200 | 240,137 | 372,000 | 22.25 |
| 1981 | 325 | 250 | 1,400 | 124,000 | 312,000 | 163.30 |
| 1982 | 325 | 250 | 1,400 | 116,242 | 129,659 | 17.00 |
| 1983 | 325 | 250 | 1,400 | 267,500 | 222,400 | 117.40 |
| 1984 | 400 | 305 | 2,200 | 428,956 | 385,510 | 36.85 |
| 1985 | 400 | 305 | 2,200 | 698,180 | 965,000 | -- |
| 1986 | 425 | 325 | 2,300 | 681,029 | 825,592 | -- |
| 1987 | 425 | 325 | 2,300 | 488,931 | 794,600 | -- |
| 1988 | 440 | 335 | 2,415 | 520,368 | 580,441 | -- |
| 1989 | 720 | 720 | 2,560 | 412,161 | 350,700 | 12.37 |
| 1990 | 760 | 760 | 2,690 | 283,436 | 97,831 | -- |
| 1991 | 800 | 800 | 2,825 | 329,846 | 548,118 | 38.60 |
| 1992 | 840 | 840 | 2,965 | 501,900 | 1,620,540 | -- |
| 1993 | 840 | 840 | 2,965 | 514,335 | 1,238,295 | 111.30 |
| 1994 | 900 | 900 | 3,250 | 520,865 | 1,285,688 | 68.30 |
| 1995 | 945 | 945 | 3,410 | 417,800 | 1,177,360 | 15.76 |
| 1996 | 1,200 | 1,200 | 4,500 | 643,925 | 1,493,413 | 42.49 |
| 1997 | 1,400 | 1,400 | 4,500 | 1,003,197 | 1,785,137 | 7.43 |
| 1998 | 1,650 | 1,650 | 5,000 | 900,800 | 2,312,750 | 11.00 |
| 1999 | 1,850 | 1,850 | 5,500 | 591,312 | 1,912,881 | 19.20 |
| 2000 | 1,950 | 1,950 | 5,775 | 1,515,876 | 2,419,708 | 53.80 |
| 2001 | 2,100 | 2,100 | 6,000 | 1,102,200 | 3,033,943 | 17.50 |
| 2002 | 2,300 | 2,300 | 6,600 | 2,380,000 | 4,290,600 | 79.79 |
| 2003 | 2,500 | 2,500 | 7,000 | 1,419,110 | 5,829,081 | 52.02 |
| 2004 | 2,800 | 2,800 | 7,500 | 1,053,275 | 5,663,000 | 14.80 |
| 2005 | 3,400 | 3,400 | 7,500 | 975,800 | 6,111,787 | 24.34 |
| 2006 | 5,000 | 4,100 | 10,000 | 790,600 | 6,068,249 | 18.63 |
| 2007 | 6,000 | 5,000 | 11,000 | 997,990 | 2,131,485 | -- |
| 2008 | 6,000 | 5,000 | 11,000 | 755,368 | 1,544,261 | 14.25 |
| 2009 | 6,000 | 5,000 | 11,000 | 273,500 | 1,610,307 | -- |
| 2010 | 6,500 | 5,500 | 11,500 | 345,805 | 1,907,623 | -- |
| 2011 | 6,500 | 5,500 | 11,500 | 195,000 | 2,044,223 | .47 |
| 2012 | 6,500 | 5,500 | 11,500 | 413,785 | 2,340,500 | 21.29 |
| 2013 | 6,500 | 5,500 | 11,500 | 533,375 | 2,177,058 | 60.14 |
| 2014 | 6,500 | 5,500 | 11,500 | 404,475 | 2,070,120 | -- |
| 2015 | 6,500 | 5,500 | 11,500 | 421,000 | 2,516,196 | .78 |
| 2016 | 6,500 | 5,500 | 11,500 | 268,370 | 2,093,402 | -- |
| 2017 | 6,500 | 5,500 | 11,500 | 398,960 | 834,216 | -- |
| 2018 | 6,500 | 5,500 | 11,500 | 2,045,150 | 2,166,404 | -- |
| 2019 | 6,500 | 5,500 | 11,500 | 1,961,640 | 2,499,983 | 2.7 |
| 2020 | 6,500 | 5,500 | 11,500 | 908,875 | 2,633,177 | 2.7 |
| 2021 | 6,500 | 5,500 | 11,500 | 1,446,923 | 4,109,895 | -- |
| 2022 | 6,500 | 5,500 | 11,500 | 1,805,472 | 5,086,428 | -- |

Appendix B

Revenue and Expenses

| Division | Description | Expenses | Revenue |
|----------------------------------|---------------------------------|---------------------|-------------------|
| Park Administration | Parks Administration | 444,131.49 | |
| Park Maintenance | Park Maintenance Administration | 3,495,734.48 | |
| Park Maintenance | Parks and Buildings | 713,400.83 | |
| Park Maintenance | Forestry | 551,977.26 | |
| Park Maintenance | Capital Outlay | 47,031.06 | |
| Park Maintenance | Ballfield Fees | | 27,517.34 |
| Park Maintenance | Facility Rentals | | 9,424.00 |
| Park Maintenance | Reimbursement | | 23,510.43 |
| Park Maintenance | Contributions | | 3,638.03 |
| Park Maintenance | Other Revenue / Grant | | 101,195.44 |
| Park Maintenance | TOTAL | 4,808,143.63 | 165,285.24 |
| Recreation Administration | Recreation Administration | 306,097.11 | |
| Recreation Administration | Passport to Fun | 11,221.68 | |
| Recreation Administration | Community Brochure | 18,130.22 | |
| Recreation Administration | TOTAL | 335,449.01 | |
| Special Events | Special Events Administration | 62,199.35 | 350.00 |
| Special Events | July 4th Celebration | 75,295.26 | 1,620.00 |
| Special Events | Special Initiatives | 550.62 | 50.00 |
| Special Events | Halloween Party | 4,963.03 | 1,100.00 |
| Special Events | PeopleFest | 2,422.77 | 150.00 |
| Special Events | TOTAL | 145,431.03 | 3,270.00 |
| Senior Center | Senior Center Administration | 412,894.13 | 719.04 |
| Senior Center | Rentals | | 10,547.90 |
| Senior Center | Trips | 15,031.69 | 19,232.00 |
| Senior Center | Classes/Programs/Events | 25,536.78 | 30,866.66 |
| Senior Center | Other Revenue | | |
| Senior Center | Contributions | | 3,250.00 |
| Senior Center | TOTAL | 453,462.60 | 64,615.60 |
| Beaches | Riley Lake Park | 28,620.57 | |
| Beaches | Round Lake Park | 25,998.24 | |
| Beaches/Oak Point Pool | TOTAL | 54,618.81 | |

Appendix B

Revenue and Expenses (continued)

| Division | Description | Expenses | Revenue |
|-------------------------------|---------------------------------------|---------------------|---------------------|
| Park Rental Facilities | Park Building/Pavilion Rentals | 81,114.00 | 80,085.00 |
| Community Center | Community Center Administration | 3,134,881.37 | |
| Community Center | Parking Permits | | 31,795.17 |
| Community Center | Memberships | | 1,248,333.93 |
| Community Center | College Memberships | | 17,661.63 |
| Community Center | Daily Fees | | 27,882.07 |
| Community Center | Facility Rentals | | 40,049.89 |
| Community Center | Cash Over/Short & Other Revenue | | 8,156.56 |
| Community Center | Merchandise for Sale | | 159.03 |
| Community Center | Aquatics Administration | 158,795.92 | |
| Community Center | Pool Operations | 467,019.67 | 243,689.38 |
| Community Center | Pool Lessons | 96,534.28 | 202,857.50 |
| Community Center | Pool Special Events | 845.73 | 4,727.90 |
| Community Center | Fitness Administration | 172,732.28 | |
| Community Center | Fitness Classes | 248,321.15 | 2,222.46 |
| Community Center | Silver Sneakers & Fit | | 190,384.54 |
| Community Center | Fitness Center | 251,723.62 | 62,130.64 |
| Community Center | Ice Administration | 445,909.41 | |
| Community Center | Ice Lessons | 40,754.41 | 62,965.00 |
| Community Center | Ice Operations | 74,132.87 | 1,486,146.68 |
| Community Center | Ice Show | 1,643.52 | 7,002.96 |
| Community Center | Concessions | 174,993.04 | 150,026.34 |
| Community Center | Racquetball | | 3,438.60 |
| Community Center | Play Care | 57,949.88 | 19,929.97 |
| Community Center | Gymnasium | 1,815.52 | 21,788.30 |
| Community Center | Special Events | 358.50 | 50.00 |
| Community Center | Birthday Parties | 511.61 | 5,215.26 |
| Community Center | Fit Kid Club | 2,895.08 | 145.08 |
| Community Center | Specialty Fitness Programs | 4,536.16 | 5,045.70 |
| Community Center | Pickleball | 14,965.84 | 14,696.20 |
| Community Center | TOTAL | 5,351,319.86 | 3,856,500.79 |

Appendix B

Revenue and Expenses (continued)

| Division | Description | Expenses | Revenue |
|-------------------------------|--------------------------------|-------------------|-------------------|
| Youth Programs | Youth Programs Administration | 182,281.68 | 2,000.00 |
| Youth Programs | Youth Programs | 59,295.08 | 79,903.75 |
| Youth Programs | Skating Rinks/Warming Houses | 50,041.59 | 240.00 |
| Youth Programs | Playground Camps | 126,705.57 | 74,244.00 |
| Youth Programs | Special Events & Trips | 1,542.91 | 3,115.00 |
| Youth Programs | Camps | 114,323.67 | 142,523.25 |
| Youth Programs | Tennis | 56,520.99 | 62,010.10 |
| Youth Programs | Safety Camp | 16,796.65 | 13,618.00 |
| Youth Programs | Teen Programs | 2,333.75 | 5,376.00 |
| Youth Programs | Preschool Events | 72,369.85 | 95,587.78 |
| Youth Programs | Outreach | 18,193.96 | 9,500.00 |
| Youth & Family | TOTAL | 700,405.70 | 488,117.88 |
| Art Center | Art Center Administration | 431,490.91 | 10,000.00 |
| Art Center | Lessons & Classes | | 173,461.00 |
| Art Center | Non-Resident Surcharge | | 69.75 |
| Art Center | Open Fees | | 3,354.44 |
| Art Center | Items for Sale | | 8,019.63 |
| Art Center | Contributions | | 10,075.00 |
| Art Center | Other Rental | | 13,262.00 |
| Art Center | Facility Rental | | 3,662.17 |
| Art Center | TOTAL | 431,490.91 | 221,903.99 |
| Outdoor Center | Outdoor Center Administration | 282,368.98 | 2,600.00 |
| Outdoor Center | Rentals | | 9,274.00 |
| Outdoor Center | Programs | | 75,543.50 |
| Outdoor Center | TOTAL | 282,368.98 | 87,417.50 |
| Therapeutic Recreation | Therapeutic Rec Administration | 101,499.52 | |
| Therapeutic Recreation | Inclusion/Accessibility | 43,203.01 | |
| Therapeutic Recreation | Adaptive Programs | 16,562.06 | 21,742.29 |
| Therapeutic Recreation | TOTAL | 161,264.59 | 21,742.29 |

Appendix B

Revenue and Expenses (continued)

| Division | Description | Expenses | Revenue |
|--|--------------------------------|----------------------|---------------------|
| Organized Athletics | Adult Athletics Administration | 113,077.78 | |
| Organized Athletics | Adult Open Gym | 553.00 | 55.80 |
| Organized Athletics | Basketball | 5,219.14 | 2,050.65 |
| Organized Athletics | Bocce | | 292.95 |
| Organized Athletics | Broomball | 1,555.75 | 0.00 |
| Organized Athletics | Pickleball | 600.00 | 12,651.45 |
| Organized Athletics | Softball | 47,411.58 | 48,697.34 |
| Organized Athletics | Touch Football | 5,713.00 | 3,422.40 |
| Organized Athletics | Volleyball | 68,370.85 | 87,124.87 |
| Organized Athletics | Special Initiatives | 1,459.18 | |
| Organized Athletics | TOTAL | 243,960.28 | 154,295.46 |
| Arts | Arts Administration | 33,099.26 | |
| Arts | Harvest to Halloween | 6,020.76 | 1,375.00 |
| Arts | Community Band | 6,636.62 | 4,405.00 |
| Arts | Winter Theatre | 11,522.81 | 4,351.08 |
| Arts | Staring Lake Concert | 26,658.97 | 550.00 |
| Arts | Summer Theatre | 30,020.16 | 8,350.00 |
| Arts | Theatre Initiative | 44,205.79 | 22,095.47 |
| Arts | Arts in the Park | 3,793.50 | 3,652.80 |
| Arts | TOTAL | 161,957.87 | 44,779.35 |
| Parks and Recreation Department | | 13,655,118.76 | 5,188,013.10 |

Appendix C

Program Participation

| Division | Description | 2022 | 2021 | 2020 |
|---|--|----------------|----------------|----------------|
| Outdoor Ice Rinks/ Sledding Hill | Warming House Use | 25,818 | 18,347 | 23,564 |
| Beaches | Lake Riley Swimmers in Water | 5,389 | 11,037 | 11,907 |
| Beaches | Lake Riley Beach Patrons | 3,114 | 6,306 | 11,979 |
| Beaches | Round Lake Swimmers in Water | 4,728 | 5,048 | 8,787 |
| Beaches | Round Lake Beach Patrons | 2,825 | 9,633 | 11,779 |
| Beaches | TOTAL | 16,056 | 32,024 | 44,452 |
| Community Center | Open Skate & Developmental Ice | 15,427 | 12,383 | 10,383 |
| Community Center | Ice Skate Rentals | 4,733 | 2,492 | 2,400 |
| Community Center | Ice Skating Lessons | 765 | 475 | 449 |
| Community Center | Aquatic Programs | 1,223 | 1,646 | 125 |
| Community Center | Open Swim | 40,238 | 31,606 | 24,409 |
| Community Center | Memberships | 1,964 | 1,346 | 1,683 |
| Community Center | Fit Kid Club / Play Care | 2,423 | 243 | 0 |
| Community Center | Group Fitness Classes | 68,963 | 45,572 | 39,281 |
| Community Center | Membership Scans | 190,548 | 119,482 | 88,363 |
| Community Center | TOTAL Individuals entering building | 850,000 | 625,000 | 300,000 |
| Outdoor Center | Trips & Programs | 1,925 | 1,630 | 813 |
| Outdoor Center | Nature Rocks | 1,306 | 116 | 60 |
| Outdoor Center | Group Visits, Events, Parties | 698 | 502 | 26 |
| Outdoor Center | Animal Open House | 650 | 600 | Canceled |
| Outdoor Center | TOTAL | 4,579 | 2,248 | 899 |
| Art Center | Programs | 1,862 | 1,262 | 723 |
| Art Center | Events | 325 | 40 | 7 |
| Art Center | Open Studio | 2,029 | 1,388 | 765 |
| Art Center | Birthday Parties | 294 | 92 | 100 |
| Art Center | Group Visits | 700 | 302 | 74 |
| Art Center | Drop-In Classes | 1,275 | 408 | 67 |
| Art Center | TOTAL | 6,485 | 4,669 | 1,936 |
| Senior Center | Trips | 639 | 28 | 49 |
| Senior Center | Classes | 3,115 | 867 | 1,750 |
| Senior Center | Programs | 10,640 | 4,420 | 3,000 |
| Senior Center | Special Events | 1,881 | 670 | 300 |
| Senior Center | Drop-In Activities | 8,568 | ---- | 225 |
| Senior Center | Clubs/Organized Groups | 1,651 | 630 | 450 |
| Senior Center | TOTAL | 26,494 | 6,615 | 5,800 |

Appendix C

Program Participation (continued)

| Division | Description | 2022 | 2021 | 2020 |
|---|-----------------------------------|----------------|----------------|------------------------|
| Youth Development | Adaptive Programs | 206 | 188 | 64 |
| Youth Development | Youth / Teen Programs | 1,029 | 900 | 640 |
| Youth Development | Adult Programs | 57 | 52 | 51 |
| Youth Development | Preschool Programs | 1,366 | 998 | 496 |
| Youth Development | Camp Programs | 2,832 | 2,700 | 392 |
| Youth Development | TOTAL | 5,490 | 4,838 | 1,643 |
| Organized Athletics | Basketball (teams) | 90 | 13 | 9 |
| Organized Athletics | Softball - Summer (teams) | 860 | 49 | 46 |
| Organized Athletics | Softball - Fall (teams) | 540 | 31 | Canceled |
| Organized Athletics | Football (teams) | 140 | 16 | 27 |
| Organized Athletics | Volleyball (teams) | 3,192 | 210 | 201 |
| Organized Athletics | Pickleball (individuals) | 240 | 88 | 71 |
| Organized Athletics | Serving TOTAL Individuals | 5,062 | 4,536 | 4,195 |
| Arts | Winter Theatre | 261 | 260 | Canceled |
| Arts | Children Theater Workshop/Camp | 300 | 285 | Canceled |
| Arts | One Acts | 358 | Canceled | Canceled |
| Arts | Womens One Acts | 324 | 239 | Canceled |
| Arts | Staring Lake Concert Series | 5,005 | 3,183 | 2,451 |
| Arts | KidStock Concerts | 1,280 | 1,689 | 487 |
| Arts | Summer Musical | 3,000 | 750 | Canceled |
| Arts | Arts in the Park | 1,800 | 700 | 450 |
| Arts | TOTAL | 12,328 | 7,106 | 3,638 |
| Special Events | Winter Blast (Rock on Ice) | 500 | Canceled | 500 |
| Special Events | Ice Show | Canceled | Canceled | Canceled |
| Special Events | Animal Open House | 650 | Canceled | Canceled |
| Special Events | Park Clean-Up Day | 573 | 476 | 476 |
| Special Events | Floating Egg Hunt | 60 | Canceled | Canceled |
| Special Events | The Give Gathering | 150 | 80 | Canceled |
| Special Events | Arbor Day Walk & Green Fair | 150 | 200 | Canceled |
| Special Events | Fitness in the Parks | 1,512 | 2,049 | 2,591 |
| Special Events | Hometown Celebration July 3 & 4 | 10,000 | 9,000 | Some Virtual |
| Special Events | Movies in the Park | 490 | 375 | 320 |
| Special Events | PeopleFest! Party | 950 | 200 | Virtual |
| Special Events | Floating Pumpkin | 122 | 120 | 62 |
| Special Events | Indoor/Outdoor Triathlon - Spring | 14 | 34 | Canceled |
| Special Events | Indoor Triathlon - Fall | Canceled | 23 | Canceled |
| Special Events | Harvest to Halloween | 4,000 | 3,500 | new program in 2021 |
| Special Events | TOTAL | 19,111 | 16,097 | 4,983 |
| Grand Total of Program Participation | | 971,423 | 721,440 | 389,826 |

Appendix D

Room and Park Rental Use

| Location | Rentals | Revenue |
|--|------------|---------------------|
| Community Center Gym | 25 | 3,435.00 |
| Community Center Lounge | 50 | 3,060.00 |
| Community Center Board Room 101 | 16 | 65.00 |
| Community Center Aquatic Room 110 | 58 | 4,192.50 |
| Community Center Room 201 | 8 | 727.50 |
| Community Center Room 203 | 27 | 1,800.02 |
| Community Center Room 204 | 29 | 2,723.00 |
| Community Center Aquatic Dryland | 80 | 599.60 |
| Community Center Cambria Room | 170 | 26,882.27 |
| Community Center Racquetball Cts | 5 | 150.00 |
| Crestwood Park Shelter/Warming | 8 | 955.00 |
| Edenvale Park Shelter/Warming House | 5 | 495.00 |
| Forest Hills Shelter/Warming House | 6 | 643.00 |
| Homeward Hills Park Shelter/Warming | 38 | 8,747.50 |
| Miller Park Shelter/Warming House | 14 | 1,505.00 |
| Nesbitt Preserve Shelter/Warming House | 7 | 550.00 |
| Prairie View Shelter/Warming House | 11 | 330.00 |
| Purgatory Creek Park Pavilion | 41 | 8,303.50 |
| Riley Lake Park Pavilion | 73 | 16,215.28 |
| Riley Jacques Barn | 31 | 15,640.50 |
| Round Lake Park Pavilion | 61 | 10,335.00 |
| Senior Center Community Room/Kitchen | 33 | 7,601.96 |
| Senior Center Rooms | 27 | 3,442.93 |
| Staring Lake Amphitheatre | 3 | 105.00 |
| Totals | 741 | \$111,626.60 |

Appendix E

Public Support

2022 Donations for Parks and Recreation

Cash Donations

| Event | Donor | 2022 Amount |
|----------------------|---|-------------|
| Art Center | Elaine E. Sampson | \$10,000 |
| Safety Camp | E. P. Crime Prevention Fund | \$5,000 |
| EP Players | Various Donors (received through EP Community Foundation) | \$2,087 |
| Harvest to Halloween | EP Crime Prevention Fund | \$1,000 |
| 3rd & 4th of July | J.A. Price Agency, Inc. | \$1,000 |
| Nature Programs | Eden Prairie Lions | \$700 |
| Harvest to Halloween | Humana | \$500 |
| Arts in the Park | Uptime Energy Drink | \$500 |
| Garden Party | Benedictine Senior Living | |
| Arts in the Park | Shakopee | \$250 |
| August Bingo | Healthy Kids Running Series | \$250 |
| Valentines Breakfast | Next Chapter Insurance | \$250 |
| Movies in the Park | Prairie Bluffs Senior Living | \$250 |
| Shredding Event | The Dental Specialists | |
| Shredding Event | Orthodontics | \$250 |
| Shredding Event | Elim Shores | \$200 |
| Fall Lunch | Flagstone Senior Living | |
| Holiday Lunch | Community | \$200 |
| Shredding Event | Home Instead | \$200 |
| Harvest to Halloween | Summit Place | \$200 |
| 3rd & 4th of July | Summit Place | \$200 |
| Golf Classic | SW Transit | \$200 |
| Harvest to Halloween | TGA | \$200 |
| Harvest to Halloween | Wall Trends | \$200 |
| 3rd & 4th of July | Humana | \$175 |
| Arts in the Park | American Karate Studio | \$150 |
| Harvest to Halloween | City Hill Church | \$150 |
| Arts in the Park | Lions Tap | \$150 |
| Harvest to Halloween | Lions Tap | \$150 |
| Kidstock | Lions Tap | \$150 |
| PeopleFest | Lions Tap | \$150 |
| Summer Musical | Lions Tap | \$150 |
| Harvest to Halloween | Wellspring Health Center | \$150 |
| Veterans Breakfast | Hear Today | \$125 |

| Event | Donor | 2022 Amount |
|------------------------|--------------------------------------|-----------------|
| Holiday Lunch | Hear Today | \$125 |
| BBQ | Elim Shores | \$100 |
| Harvest to Halloween | EP Eye Care & Junk 360 | \$100 |
| Starring at Staring | Lions Tap | \$100 |
| Senior Awareness | St. Croix Hospice | \$100 |
| Fall Lunch | SW Transit | \$100 |
| Holiday Lunch | SW Transit | \$100 |
| Adult Teen Open House | Wellspring Health Center | \$75 |
| May Bingo | Edina Realty | \$50 |
| Golf Classic | Elim Shores | \$50 |
| Leprechaun Bingo | Flagstone Senior Living Community | \$50 |
| Fallin for Bingo | Health Source of Eden Prairie | \$50 |
| Snowman Bingo | Home Instead Senior Care | \$50 |
| Veterans Breakfast | Home Instead Senior Care | \$50 |
| Animal Open House | Lions Tap | \$50 |
| Arbor Day/Green Fair | Lions Tap | \$50 |
| Collection of One Acts | Lions Tap | \$50 |
| Fall Into Fitness | Lions Tap | \$50 |
| Flick 'n' Floats | Lions Tap | \$50 |
| Floating Pumpkin Patch | Lions Tap | \$50 |
| Indoor Triathlon | Lions Tap | \$50 |
| Movies in the Park | Lions Tap | \$50 |
| Spooky Saturday | Lions Tap | \$50 |
| Winter Blast | Lions Tap | \$50 |
| Winter Theatre | Lions Tap | \$50 |
| Valentines Bingo | Prairie Bluffs Senior Living | \$50 |
| April Bingo | Senior Asset | \$50 |
| Garden Party | Senior Asset | \$50 |
| BBQ | Senior Living Insights | \$50 |
| July Bingo | Senior Living Insights | \$50 |
| Garden Party | SouthWest Transit | \$50 |
| Senior Awareness | SW Transit | \$50 |
| June Bingo | Humana | \$25 |
| TOTAL | | \$27,312 |

In-Kind Donations

| Event | Company | Item | Value |
|----------------------|---------------------------------|-------------|--------------|
| Harvest to Halloween | EP Eye Care & Junk 360 | Candy/Prize | \$200 |
| Harvest to Halloween | EP Fastpitch Association | Candy/Prize | \$200 |
| Harvest to Halloween | Health Source of Eden Prairie | Candy/Prize | \$200 |
| Harvest to Halloween | Legacy Gymnastics | Candy/Prize | \$200 |
| Harvest to Halloween | Old National Bank | Candy/Prize | \$200 |
| Harvest to Halloween | Prairie Dental Group | Candy/Prize | \$200 |
| Harvest to Halloween | SW Transit | Candy/Prize | \$200 |
| Pickleball Courts | Southwest Metro Pickleball Club | | \$50 |

Total Value

\$1,450

Volunteer Hours

18,275 hours = \$547,336 value based on \$29.95 value for volunteer time (from Independent Sector)

| | | | |
|----------------------------------|-------|------------------------|------|
| Community Band | 5,502 | July 3 & 4 Celebration | 80 |
| Eden Prairie Players | 7,989 | Park Clean-Up | 1719 |
| Forestry Projects | 132 | PeopleFest! | 375 |
| Senior Center | 1830 | Harvest to Halloween | 80 |
| Adaptive Programs | 169 | Citywide Open House | 12 |
| Volunteer Prairie Seed Harvest | 132 | | |
| Community Groups | 80 | | |
| Outdoor Center-Bluebird Recovery | 175 | | |



Live Well
EDEN PRAIRIE

Whether you choose to live healthy, live happy, live with adventure or live in peace, the desire to live well is inherent among those who choose to Live, Work and Dream in the City of Eden Prairie.

