

LIFE in the PRAIRIE



FALL 2019

Inside
**Be Our Hero,
Earn Your Cape!**



CITY NAMED TOP 150 WORKPLACE

For the sixth consecutive year, the **Star Tribune** named the City of Eden Prairie among the **Top 150 Workplaces** in Minnesota. This year, survey data gathered from more than 140,000 employees at 2,000 public, private and nonprofit organizations ranked the City of Eden Prairie #39 on the list of midsize employers.

edenprairie.org/Employment



"The City actively promotes a supportive, encouraging and productive culture with a strong focus on customer service and stewardship. This commitment explains why Eden Prairie is consistently recognized as one of the best places to live, work and play."

— Mayor Ron Case



City Budget Feedback

The City Council adopted a preliminary 2020–2021 budget and tax levy Sept. 3 — available at edenprairie.org/Budget — and final approval takes place Dec. 3. The City is polling residents about the budget on its civic participation platform through October. Participate by creating a **Polco** account online or downloading the app.

edenprairie.org/Polco

Southwest LRT Updates

Construction along the **Southwest LRT Green Line Extension** is in full swing, with ongoing activity around **SouthWest Station**, the new **LRT bridge at I-494/Flying Cloud Drive** and **Golden Triangle Station**. Sign up for weekly updates to stay informed about the project.

SWLRT.org



BE OUR HERO!

HEY KIDS, THE FIRE DEPARTMENT INVITES YOU TO BE OUR HERO BY MAKING A COMMITMENT TO DOING ONE THING THAT COULD SAVE YOUR LIFE. READY TO EARN YOUR CAPE?

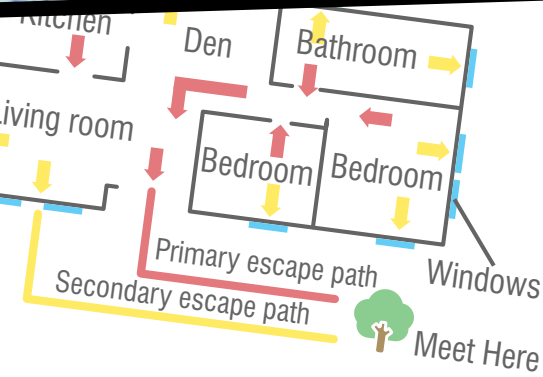
EARN YOUR CAPE!

FIRST, CHOOSE ONE LIFE-SAVING ACTION:

SLEEP WITH YOUR BEDROOM DOOR CLOSED



TEST YOUR SMOKE ALARMS TO BE SURE THEY WORK



CREATE A FAMILY FIRE ESCAPE PLAN WITH A MEETING PLACE

WEAR YOUR BIKE HELMET



WEAR YOUR LIFE JACKET



Then, ask an adult to submit a photo documenting your life-saving action at edenprairie.org/BeOurHero.

Finally, be sure to stop by Fire Station #1 (14800 Scenic Heights Rd.) during the Public Safety Open House, 11 a.m.–2 p.m. Saturday, Oct. 12, to see photos of all the Eden Prairie superheroes and be awarded your cape!

Fall Program Registration

Registration has already begun, check out these and other great Parks and Recreation programs offered this fall.



HAPPY HOUR AT THE ART CENTER

Each week offers a different art project to try, all you need to do is register, bring your favorite wine or beer, maybe a friend or two, and enjoy!



ART TRIPS

Pack your lunch and hop on board as our knowledgeable art instructors take you to a variety of metro-area destinations for art, history and interesting conversation.

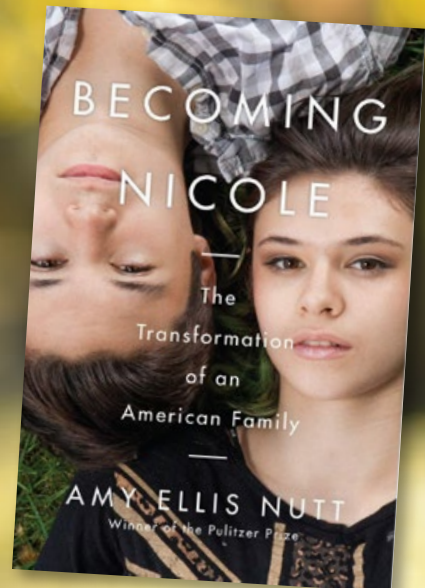
edenprairie.org/Register

Eden Prairie Reads 2019

Eden Prairie Reads is a program designed to promote reading, encourage discussion and strive for a new level of connection throughout our community. The 2019 Eden Prairie Reads book selection is **"Becoming Nicole: The Transformation of an American Family,"** by **Amy Ellis Nutt**.

Pick up a copy and read it today, then mark your calendar for a **community panel and book discussion, 6:30 p.m. Oct. 24, at City Center** (8080 Mitchell Road).

EPRreads.org





Eden Prairie Senior Center

*Celebrating Vitality
in the Community*

The Eden Prairie Senior Center welcomes older adults of all ages to participate in classes, clubs, activities and events — from Party Bridge to Community Woodshop, and Book Clubs to Yoga, there's something for everyone!



Eden Prairie Senior Center
8950 Eden Prairie Road

Monday–Friday
8:30 a.m.–4 p.m.

Sign up for Senior Center email updates or opt to receive the Senior Center newsletter in the mail — visit us online or call **952-279-8050** to subscribe.

edenprairie.org/SeniorCenter



Composting at Home

Composting converts waste from your kitchen and yard into a nutrient-rich soil amendment or mulch. You can compost organic material, including fruit and vegetable peelings, grass clippings and leaves. Gardeners have used compost for centuries to supply essential nutrients for plant growth.



hennepin.us/Composting

Home Energy Hub

The **Minnesota Center for Energy and Environment** now offers an online **Home Energy Hub**. The site is full of tips and information to improve your home's energy use and comfort and find out which of the latest innovations will work best for you.

HomeEnergyHub.org



Managing Yard Waste

Rainfall runoff washes through storm sewers and into local lakes and rivers, carrying yard waste and other pollutants. Proper disposal of yard waste helps protect the health of local waterways. Options for managing yard waste include curbside pick-up, available through most trash haulers, using a local drop-off site or composting in your backyard.

hennepin.us/YardWaste

Organics Recycling

About one-third of our trash is organic material, including food, food-soiled paper and certified compostable products. Organics recycling and home composting reduces our trash and puts it to better use. Several organics recycling drop-off facilities are available to Hennepin County residents and curbside organics recycling will be available throughout the County by January 2022.

hennepin.us/Organics



edenprairie.org/SustainableEP





Mark Freiberg Kathy Nelson Ron Case Brad Aho PG Narayanan

Mayor
Ron Case
952-949-8593

Council Members

Brad Aho
952-303-6884
Mark Freiberg
612-581-7504

PG Narayanan
952-393-3100
Kathy Nelson
952-941-6613

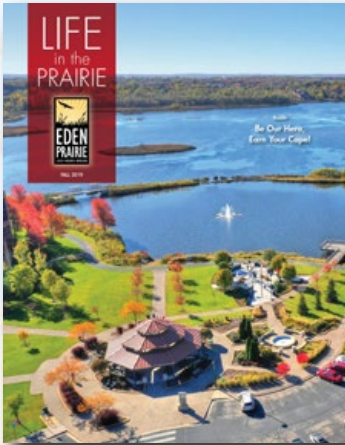
AllCouncil@edenprairie.org

edenprairie.org



RESIDENTIAL POSTAL CUSTOMER

Mark Your Calendar



On the Cover:
Purgatory Creek Park



Eden Prairie Players Present:
A Collection of One Acts
7:30 p.m. Sept. 13–14; 19–21
2 p.m. Sept. 15, 22
Riley-Jacques Barn

Arts in the Park
9 a.m.–4 p.m. Sept. 21
Purgatory Creek Park

Fall Harvest Celebration
2–5 p.m. Oct. 5
Riley-Jacques Barn

Public Safety Open House
11 a.m.–2 p.m. Oct. 12
City Center

Spooky Saturday
3–5 p.m. Oct. 26
Community Center

Halloween on the Mall
5–7:30 p.m. Oct. 31
Eden Prairie Center

edenprairie.org/Calendar

2019 EDEN PRAIRIE Recycling Guide



This annual publication provides residents with the most current information about recycling in a concise and convenient format — a tool you can reference throughout the year in your efforts to reduce, reuse and recycle.

It is part of the City's ongoing **Sustainable Eden Prairie** efforts focused on education and implementation of sustainable practices to protect the environment and our natural resources. Leading by example, our goal for this initiative is to provide a foundation for residents and businesses to carry out sustainable practices in four areas — energy, landscape, waste and water — while creating a legacy of sustainability in our community so future generations of Eden Prairie residents continue to benefit from the natural resources we enjoy today.



edenprairie.org/SustainableEP

Recycling at Home

In Eden Prairie, all trash haulers are required to provide recycling services to single and multiunit households, through which the following items can be recycled:

- Boxes — cardboard, cereal, crackers, shoes, gifts, electronics, toothpaste, medication, toiletry
- Cartons — milk, juice, soup, broth, wine
- Glass bottles and jars
- Metal cans
- Paper — catalogs, inserts, magazines, mail, newspaper, phone books, shredded paper in closed paper bags
- Plastic bottles and jugs — water, soda, juice, milk, ketchup, salad dressing, dishwashing liquid, laundry detergent, shampoo, soap, lotion
- Plastic cups and containers — yogurt, pudding, fruit, disposable cups and bowls, margarine, cottage cheese, produce, deli, takeout
- Plastic packaging from toys and electronics



Remember to rinse all food containers. For cartons and plastic bottles, jugs and containers, leave caps and lids on. For glass bottles and jars, remove caps and lids.

Items that cannot be recycled include:

- Aerosol cans
- Aluminum foil
- Ceramic or porcelain vessels
- Dishes
- Drinking glasses
- Empty paint cans*
- Giftwrap
- Hazardous product containers
- Microwaveable food trays
- Paper cups, plates, napkins, towels
- Paper soiled with food
- Plastic bags**
- Plastic wrap
- Scrap metal
- Styrofoam™
- Window glass, mirrors

* Most trash haulers accept paint cans if empty and/or paint is dry.

**Plastic bags are accepted at Hennepin County Drop-Off Facilities.

Household Hazardous Waste

Hennepin County residents can dispose of the following items at Hennepin County Drop-off Facilities in Bloomington (1400 W. 96th Street) and Brooklyn Park (8100 Jefferson Highway):

Automotive Products

- Automotive fluids – antifreeze, brake fluid, transmission fluid, fuel
- Lead-acid batteries
- Oil and oil filters

Electronics (quantity limits apply)

- Audio and video equipment
- Computer keyboards, mice, printers, scanners, cords
- Cords and string lights
- DVD players, VCRs
- Rechargeable products – tools, toothbrushes, toys
- Telephones, cellphones

Household, Lawn and Garden Products

- Adhesives – flammable or petroleum-based
- Aerosols – pressurized or containing product
- Batteries – place tape over positive terminal
- Cardboard (must flatten boxes)
- Fire extinguishers
- Grills and lawn mowers (remove nonmetal parts and drain fluids)
- Household cleaners
- Needles and sharps (must be in rigid, puncture-resistant, plastic container with screw-on lid and labeled as household sharps)
- Organics (must be in BPI-certified bags)
- Paint, stains, varnishes
- Pesticides
- Pool chemicals
- Propane/gas cylinders (1-pound, non-refillable containers only)

Mercury-Containing Items

- Fluorescent light bulbs (limit 25 per year)
- Thermometers
- Thermostats

Media

- DVDs, CDs and Blu-ray discs
- Flash drives and secure digital (SD) memory cards
- Game cartridges
- Inkjet and laser printer toner cartridges
- Video and audio cassette tapes

Items Accepted for a Fee (quantity limits apply)

- Air conditioners
- Appliance compressors
- Appliances
- Boiler gas valves
- Computers, laptops, monitors
- Dehumidifiers
- Furnaces
- Garbage disposals
- Mattresses, box springs (Brooklyn Park facility only)
- Pumps (bilge and sump)
- Tires
- TVs
- Water coolers
- Water heaters

[hennepin.us/DropOff](https://www.hennepin.us/DropOff)

Green Disposal Guide

Hennepin County's online **Green Disposal Guide** offers reuse, recycling and disposal options for batteries, furniture, carpet and more. It also includes tips about shopping smarter, living greener and creating less waste.

hennepin.us/GreenDisposalGuide

Choose to Reuse

Keep reusable items out of the trash and obtain quality items without buying new. Choosing to reuse helps us live sustainably by reducing waste, saving natural resources, conserving energy, preventing pollution and saving money.

hennepin.us/ChooseToReuse

Fix-It Clinics

Get household items fixed free of charge and learn valuable repair skills at a **Hennepin County Fix-It Clinic** where volunteers help you repair small household appliances, clothing, electronics, mobile devices and more!

hennepin.us/FixItClinic

Medicine Disposal

Proper disposal of unused medication is important to prevent abuse and protect the environment. The Eden Prairie **Police Department** has medicine disposal bags available to residents and hosts drug take-back day events in the spring and fall. Medicine can also be disposed at any Hennepin County drop-box location.

hennepin.us/Medicine

Become a Master Recycler/Composter

Join fellow waste reduction enthusiasts and become an advocate in our community as a **Hennepin County Master Recycler/Composter**. Participants attend an extensive six-week course on waste prevention, recycling and composting, then complete 30 volunteer hours for certification.

hennepin.us/MasterRecyclers



City of Eden Prairie
8080 Mitchell Road
Eden Prairie, MN 55344
952-949-8300
TTY: 952-949-8399