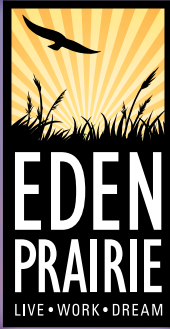


# LIFE in the PRAIRIE



SUMMER 2018

Inside  
2017 Annual Report

Life in the Prairie  
2018 Best of Show Winner  
See page 2

# Award-Winning Communications

The City's Communications Division earned top honors from the **Minnesota Association of Government Communicators**, winning the **Northern Lights Award** (first place) for the redesigned **Life in the Prairie** newsletter and the **Bronze Award** (third place) for the **Aspire Eden Prairie 2040** logo design.

In addition, the Life in the Prairie newsletter was named **2018 Best of Show**, the top award granted to a single entry that best demonstrates effective government communications.



[edenprairie.org/News](http://edenprairie.org/News)

# Urban Coyotes

Eden Prairie residents report about 32 coyote sightings per year. While coyotes are not a threat to humans, they occasionally prey on small domestic animals.

To keep pets safe, supervise small dogs and cats outside and install coyote-proof fencing around your yard or kennel. If you see a coyote in Eden Prairie, shout or make loud noises to frighten it away. Then take note of the location and behavior of the animal, and visit the City website to report the sighting.

[edenprairie.org/Coyotes](http://edenprairie.org/Coyotes)

# Public Art in Eden Prairie

Made possible by a grant from the **National Endowment for the Arts**, a new rotating sculpture program is kicking off in Eden Prairie this summer!

Don't miss **Eggcited**, seated at the **Art Center**; **Sail**, standing tall at **Purgatory Creek Park**; and **Soul**, greeting visitors at the **Outdoor Center**. Snap a photo of your **#PublicArtEP** experience and share it on social media!

[edenprairie.org/PublicArt](http://edenprairie.org/PublicArt)



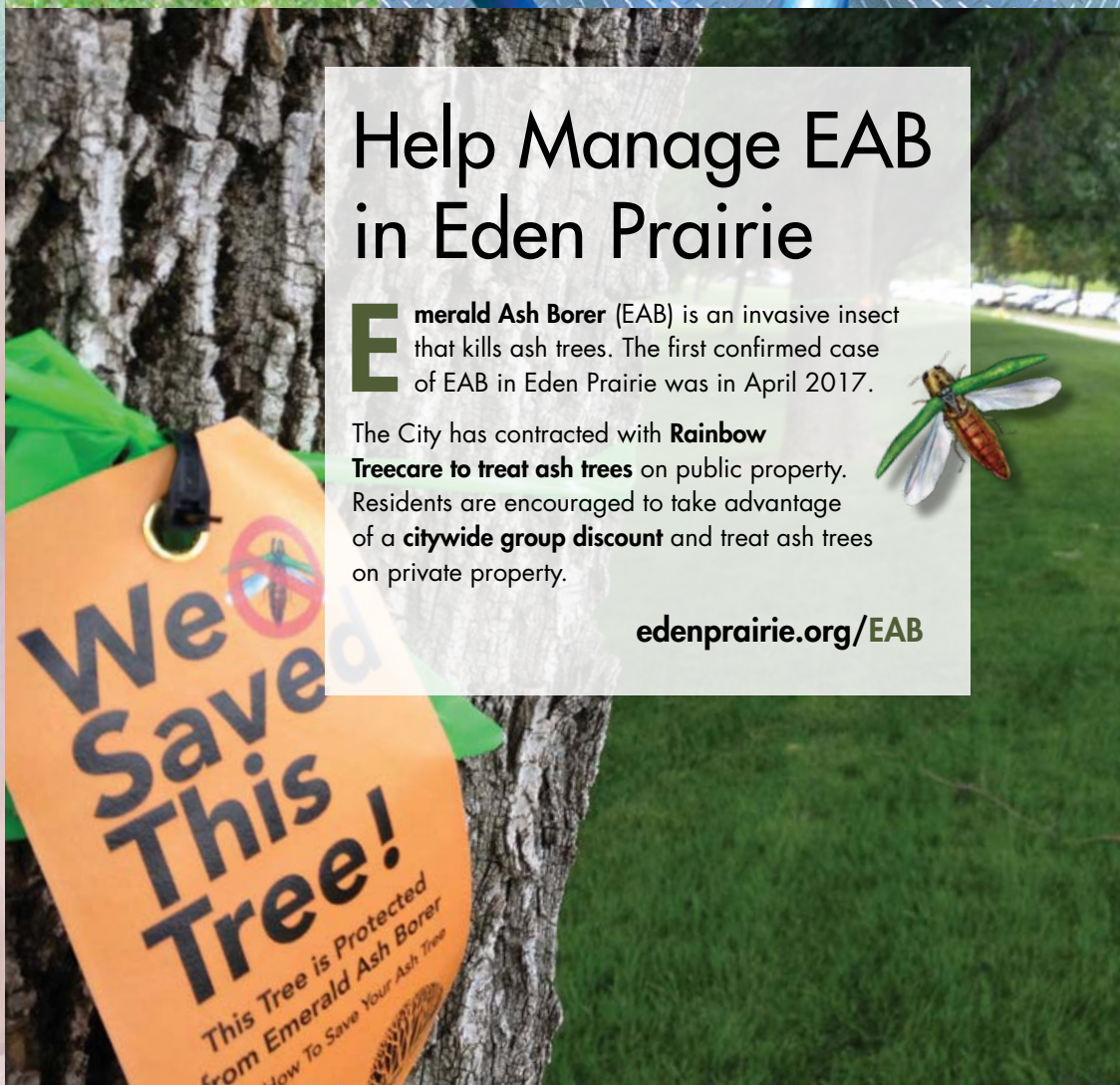
# Help Manage EAB in Eden Prairie

**E**merald Ash Borer (EAB) is an invasive insect that kills ash trees. The first confirmed case of EAB in Eden Prairie was in April 2017.

The City has contracted with **Rainbow Treecare** to treat ash trees on public property. Residents are encouraged to take advantage of a **citywide group discount** and treat ash trees on private property.



[edenprairie.org/EAB](http://edenprairie.org/EAB)





# ANNUAL REPORT



## Message from the City Manager

I am pleased to present the City of Eden Prairie **2017 Annual Report**.

Through a combination of graphics and plain language, this publication provides a high-level, easy-to-understand snapshot of the City's finances.

Sincerely,

**Rick Getschow**  
City Manager



## About the City of Eden Prairie

The City of Eden Prairie is home to more than 63,000 residents, 2,800 businesses, outstanding schools, and a multitude of natural and man-made amenities. With its flourishing economy, engaged community and quality of life rating consistently higher than local and national benchmarks, life is good in Eden Prairie.

## City services provided in 2017



**1,742** fire calls



**46,319** police service calls



**6,227** building permits issued



**5,061** property appraisals completed



**44** parks, **134** miles of trails,  
**580** lane miles of City streets maintained



**4,360** hydrants flushed



**60** miles of sanitary sewer cleaned



**690** stormwater sump pumps maintained

# CITY FINANCES

**This report provides financial results for the following accounts:**

## General Fund

City's primary operating fund

## Capital Projects Funds

Funds for the acquisition or construction of major capital infrastructure

## Debt Service Funds

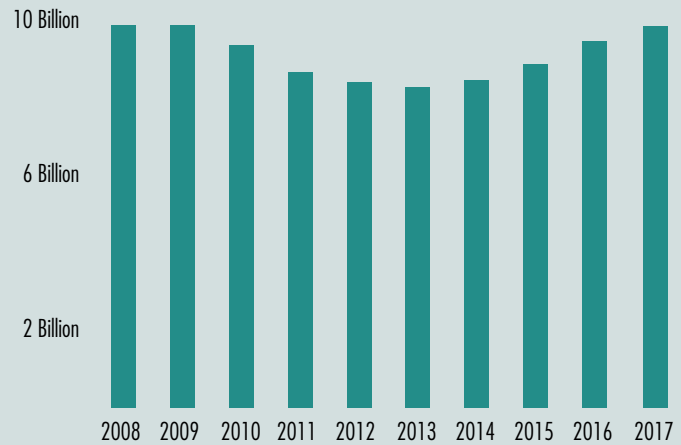
Funds collected from taxes and other sources to pay debt

## Enterprise Funds

Funds collected from user fees from both internal and external customers

## 2017 Market Value

The value of all residential and commercial property in the City.



**2017 Market Value: \$9.9-billion  
+2.5 percent versus 2016**

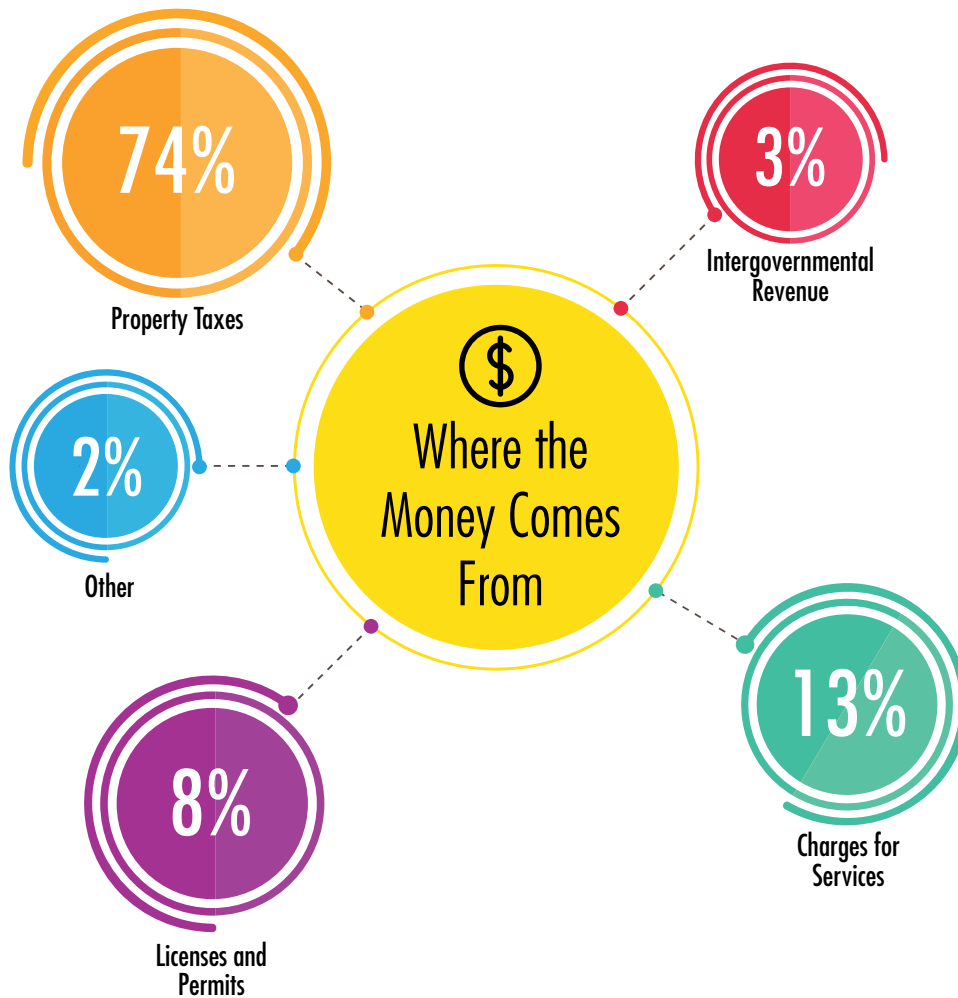
## Statement of Net Position

**T**his financial summary is a condensed view of the City's assets and liabilities for all funds as of Dec. 31, 2017. In 2017, assets exceeded liabilities by \$388-million. Of this amount, \$316-million is invested in capital assets, \$49-million is unrestricted and may be used to meet the City's ongoing obligations to residents and creditors, and \$23-million is restricted. The City has a strong financial position and maintained its net position for 2017.



	ENTERPRISE FUNDS		OTHER FUNDS		TOTAL	
	2017	2016	2017	2016	2017	2016
<b>Total Assets and Deferred Outflows</b>	\$149,184,701	\$151,733,039	\$337,508,834	\$344,274,833	\$486,693,535	\$496,007,872
<b>Total Liabilities and Deferred Inflows</b>	8,968,420	10,098,009	89,463,130	104,499,107	98,431,550	114,597,116
<b>Total Net Position</b>	\$140,216,281	\$141,635,030	\$248,045,704	\$239,775,726	\$388,261,985	\$381,410,756

# GENERAL FUND REVENUE



REVENUE	2017	2016	2015
Charges for Services	\$5,744,494	\$5,325,932	\$4,864,818
Intergovernmental Revenue	1,504,055	1,479,880	1,428,239
Licenses and Permits	3,565,161	3,770,890	4,467,194
Other	829,818	874,760	872,109
Property Taxes	32,386,507	31,383,273	30,687,367
<b>Total</b>	<b>\$44,030,035</b>	<b>\$42,834,735</b>	<b>\$42,319,727</b>

**Budgeted Revenue: \$43,575,131**

**Actual Revenue: \$44,030,035**

Actual revenue was 101 percent of budget; overall results were as expected.

## Significant 2017 Eden Prairie Property Investments

### **Cambria**

Interior remodel  
valued at \$3,708,565

### **Cambria Hangar**

New airport hangar  
valued at \$3,300,000

### **Jerry's Foods**

Interior remodel  
valued at \$3,023,344

### **Performing Institute of Minnesota Arts High School**

Interior remodel  
valued at \$1,498,000

### **Christensen Group Insurance**

Interior remodel  
valued at \$1,300,000

### **Prestige Preschool Academy**

New building  
valued at \$1,300,000

### **Eden Glen Apartments**

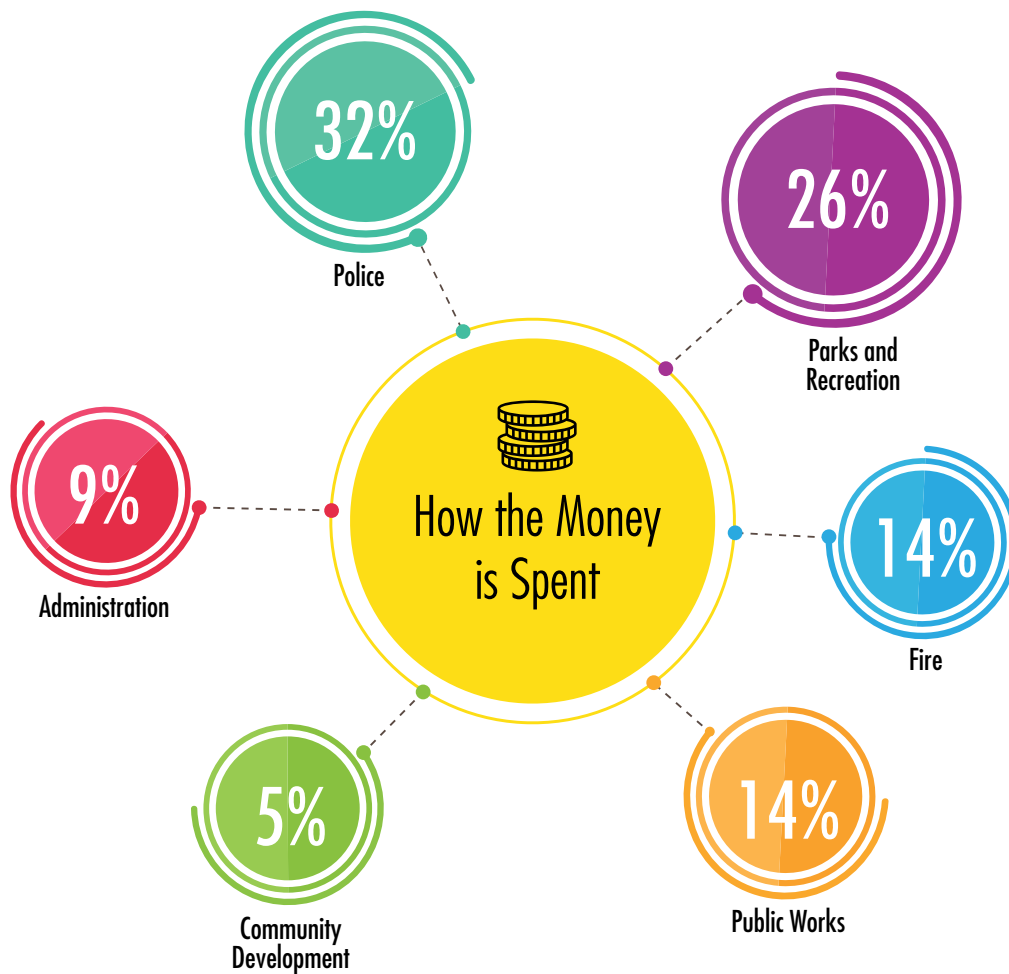
Interior remodel  
valued at \$1,200,000

### **Prairie Meadows Cooperative**

Interior remodel  
valued at \$1,000,000



# GENERAL FUND EXPENDITURES



EXPENDITURES	2017	2016	2015
Administration	\$4,033,588	\$4,118,176	\$3,809,732
Community Development	2,376,934	2,180,541	2,191,062
Fire	6,220,088	5,745,852	5,801,292
Parks and Recreation	11,345,396	10,983,233	10,594,459
Police	14,069,709	13,775,455	13,474,840
Public Works	6,026,334	5,828,269	5,687,743
<b>Total</b>	<b>\$44,072,049</b>	<b>\$42,631,526</b>	<b>\$41,559,128</b>

**Budgeted Expenditures: \$43,999,212**

**Actual Expenditures: \$44,072,049**

Actual expenditures were 100.17 percent of budget; overall results were as expected.





## 2017 Capital Improvement Expenses: \$9,500,964

### Significant Projects

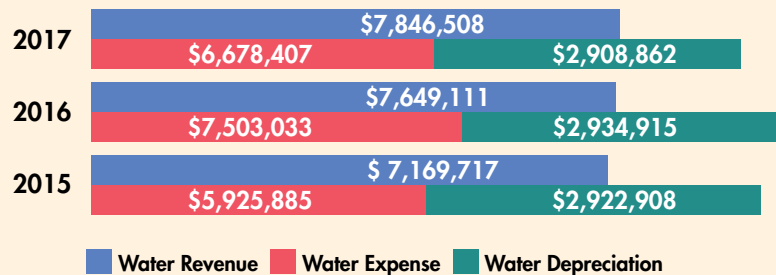
Pavement Management	\$2,163,804
Riley Lake Park Phase II Improvements	\$1,606,062
Cedar Hills Park	\$761,451

## Utilities

Eden Prairie's water, wastewater and stormwater utilities serve about 20,000 residential, commercial and industrial accounts. The City's water storage facilities have a capacity of 8.5-million gallons and are supplied by a system of 15 wells permitted to pump 28-million gallons per day.

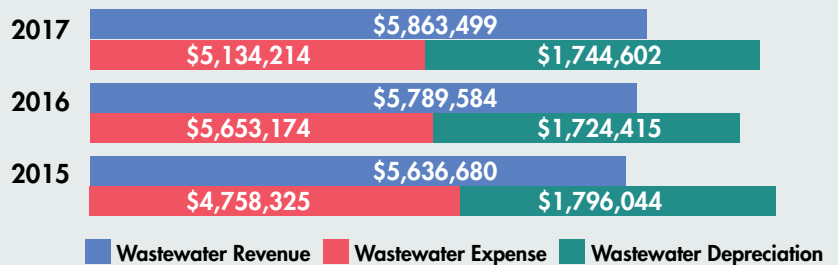
### Water Utility Financial Results

Water usage decreased from 2.4-billion gallons in 2016 to 2.3-billion gallons, and rates increased in 2017. As a result, water utility revenue increased \$197,397 from 2016 to 2017. Total operating expenses (excluding depreciation) were \$6,678,407 in 2017, which is 102 percent of the \$6,576,945 budgeted and \$824,624 less than 2016. The decrease was due mainly to the Town Center Water Tower recoating project in 2016.



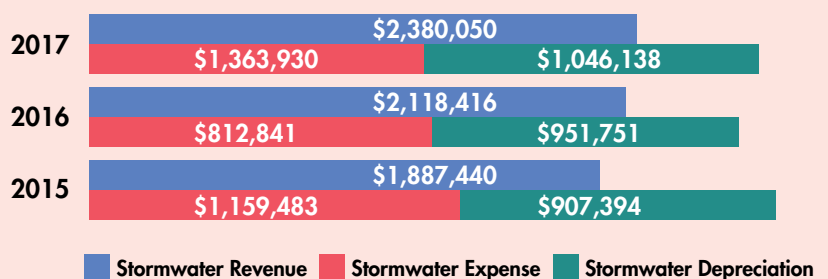
### Wastewater Utility Financial Results

In 2017, wastewater revenue increased \$73,915, or 1 percent from 2016. Total operating expenses (excluding depreciation) were \$5,134,214, which is 96 percent of the \$5,331,758 budgeted and \$518,960 less than 2016. Disposal charges are the largest expense, totaling \$3,996,877. Metropolitan Council Environmental Services establishes monthly disposal costs on a metrowide basis. For 2017, the disposal fee increased 7 percent.



### Stormwater Utility Financial Results

In 2017, stormwater revenue increased \$261,634, or 12 percent, due to a rate change. Total operating expenses (excluding depreciation) were \$1,363,930, which is 118 percent of the \$1,153,143 budgeted and \$551,089 more than 2016.







## Municipal Liquor Store Operations

**T**he City's three municipal liquor stores constitute one of the largest municipal off-sale operations in Minnesota.

**Eden Prairie Liquor** profits contribute to the financial well-being of the City by funding important capital projects. City leaders believe municipal-owned liquor operations help protect the health and safety of youth by placing emphasis on preventing sales to underage people.

Overall liquor store sales totaled \$10,280,882 in 2017, which is a 2-percent decrease from 2016; \$700,000 in profits were transferred to the Capital Improvement Project fund, which matches the 2016 transfer. Over the past 10 years, more than \$9-million in liquor store profits have funded various capital projects, including Riley Lake Park renovations, trail maintenance and Round Lake Park improvements.

# DEBT

LONG-TERM DEBT OUTSTANDING	2017	2016	2015
General Obligation	\$10,530,000	\$11,890,000	\$13,320,000
Lease Revenue	-	1,145,000	1,220,000
Revenue	3,045,000	3,510,000	2,385,000
Special Assessment	9,760,000	12,470,000	11,975,000
Tax Abatement	16,805,000	17,155,000	17,155,000
<b>Total</b>	<b>\$40,140,000</b>	<b>\$46,170,000</b>	<b>\$46,055,000</b>

**2017 Long-Term Debt Outstanding: \$40,140,000**

**-13.1 percent versus 2016**

In 2017, the City paid off the 2007A Lease Revenue Bonds used to add a third ice rink at the Community Center. The prepayment of these bonds saved the City \$303,300 in interest and \$23,650 in agent fees. The City also refinanced the 2008B Special Assessment Bonds used for the Flying Cloud Drive project.

Since 2003, **Moody's Investors Service** has assigned its highest rating, **Aaa**, to the City of Eden Prairie's bonds. In 2014, Eden Prairie secured a second **AAA** bond rating from **Standard and Poor's Financial Services**. Reasons for the consistent bond ratings include Eden Prairie's substantial and diversified tax base, strong financial operations, low debt burden, and strengths in flexibility with budget reserves, liquidity, management stability and financial policies.

## Awards

The City received the following awards (valid for one year only) from the Government Finance Officers Association:

- Certificate of Achievement for Excellence in Financial Reporting for the CAFR, for the year ended Dec. 31, 2016.
- Distinguished Budget Presentation award for the Two-Year Budget, for the fiscal years beginning Jan. 1, 2016 and 2017.
- Award for Outstanding Achievement in Popular Annual Financial Reporting, for the fiscal year ended Dec. 31, 2016.

## About this Report

The information for this report is from the City of Eden Prairie's Comprehensive Annual Financial Report (CAFR), which was prepared in accordance with Generally Accepted Accounting Principles and applicable legal requirements for the year ended Dec. 31, 2017. This report provides information to the public about City of Eden Prairie services and the costs to provide these services. For a complete review of the City's financial position for 2017, consult the CAFR.

[edenprairie.org/Budget](http://edenprairie.org/Budget)

# Seize Wind Power

**T**his summer, Eden Prairie residents are taking advantage of Minnesota's windy weather by subscribing to Xcel Energy's **Windsource**<sup>®</sup>, a renewable subscription option enabling homeowners and renters to easily power their homes with wind energy.

It takes less than five minutes to sign up and costs as little as a dollar per month to participate!

[xcelenergy.com/Windsource](http://xcelenergy.com/Windsource)



# 2017 Drinking Water Report

**T**he City provides results of drinking water monitoring to advance consumer confidence and highlight the need to protect water resources. Drinking water monitoring from Jan. 1 through Dec. 31, 2017, revealed all contaminant levels in Eden Prairie drinking water met or exceeded federal standards. A complete report is available online.



[edenprairie.org/DrinkingWater](http://edenprairie.org/DrinkingWater)



[edenprairie.org/SustainableEP](http://edenprairie.org/SustainableEP)

# Riley Lake Boat Cleaning Station

**T**o help reduce the spread of aquatic invasive species, the new Riley Lake Park boat launch now features a CD3 – clean, drain, dry and dispose – waterless cleaning station. Made possible in part by a grant from Hennepin County, the CD3 station provides a simple and safe way to clean and dry boats when leaving the lake.

[CD3Station.com](http://CD3Station.com)





Kathy Nelson Ron Case Nancy Tyra-Lukens Sherry Butcher Wickstrom Brad Aho

**Mayor**  
Nancy Tyra-Lukens  
952-949-8593

**Council Members**

**Brad Aho**  
952-303-6884

**Sherry Butcher Wickstrom**  
612-296-3721

**Ron Case**  
952-949-0915

**Kathy Nelson**  
952-941-6613

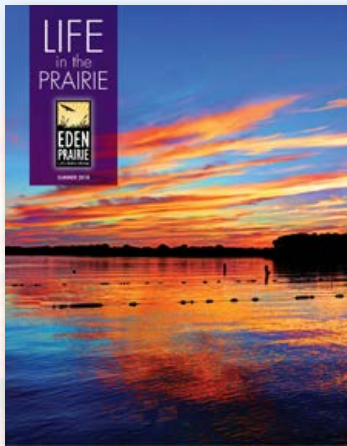
[AllCouncil@edenprairie.org](mailto:AllCouncil@edenprairie.org)

[edenprairie.org](http://edenprairie.org)



# RESIDENTIAL POSTAL CUSTOMER

## Mark Your Calendar



**On the Cover:**  
**Sunset at  
Riley Lake beach**

**2018 Concert Series: Starring at Staring**  
7 p.m. Sundays, Wednesdays,  
Fridays through Aug. 8  
Staring Lake Amphitheatre

**KidStock**  
10:30–11:15 a.m. Tuesdays,  
June 19–Aug. 14  
Staring Lake Amphitheatre

**4th of July Hometown Celebration**  
5–9 p.m. July 3  
9 a.m.–10 p.m. July 4  
Round Lake Park

**Eden Prairie Players  
Children's Theatre Workshop  
Presents: *The Pied Piper of Hamelin Town***  
2:30 p.m. and 7 p.m. July 27–28  
2:30 p.m. July 29  
Riley-Jacques Barn

**Movies in the Park**  
9 p.m. Aug. 3  
**Coco**  
9 p.m. Aug. 10  
**Star Wars: The Last Jedi**  
9 p.m. Aug. 17  
**Cars 3**  
7:30 p.m. preshow entertainment  
Staring Lake Amphitheatre

**Community Celebration of Culture**  
Aug. 3–9  
Various Locations

**Night to Unite**  
5 p.m. Aug. 7

[edenprairie.org/Calendar](http://edenprairie.org/Calendar)